



Taking Part

Report

2011-2012

1	2	3	4	5	6	7
8	9	10	11	12	13	14
15	16	17	18	19	20	21
22	23	24	25	26	27	28
29	30	31				

Annual Report 2011-2012



Contents: What is inside

1

A Message from the Trustees

4

Taking Part Leadership Team
Shropshire

6

Taking Part Leadership Team
Telford and Wrekin

8

Escape and Taking Party

9

Moving and Grooving

11

Together We Can
Art Start & Art Cart

14

Staff Team

18

Accounts

20

Organisation Chart

A Message from the Trustees



Another hard working and successful year has passed for Taking Part and seen some important changes within the organisation.

Our founding Charity Manager Jane Ellis-Morgan retired in February 2012. Jane built Taking Part up to what it is today. We are all grateful for her hard work and ideas that have provided the whole of Shropshire and Telford and Wrekin with a service that has improved so many people's lives. We wish her all the best for the future.



From 1st April 2011 Julie Mellor has officially been in post as the Charity Manager for Taking Part.

Volunteers

`The Leadership Group` are busy putting new ideas into practice to develop their individual skills. They are writing a `Business Plan` to look at key skills to match their workshops and training.



We now have regional Leadership Groups throughout the county of Shropshire. They are getting peer support from the existing leaders.



Leaders continue to be involved with many projects, meetings and campaigning for people with learning difficulties within in Shropshire. They share Taking Part's good news stories and successes with other organisations locally, regionally and nationally.



Projects

Over the past few years Taking Part has taken the lead in facilitating and developing many new projects. Some of these projects are designed for children and young people.



For adults we arrange and support regular social nights, involve them in new projects and the different consultation events which may affect their lives.



Staff

Staff have had a productive and busy year as usual, supporting our service users individually and within their activities, always looking for ways that would result in improvement and development.



Workloads can be heavy and yet the staff commitment to Taking Part remains total and we are proud of their achievements in every area.



Conclusion

Taking Part's vision for the future is positive even though we all have worries about funding.



Staff continue to build on new ideas around helping all of our service users help themselves to have independent, responsible lives.



Some activities such as coffee mornings and leisure choices could become trial schemes to introduce parts of self-funding, managed by the members with the support of Taking Part staff.

With the changes happening to funding, Staff teams are determined to keep providing an excellent service to our local communities that is focused on the full needs of our service users.



Taking Part Leadership Team Shropshire



The Taking Part Leadership Team has been working together for quite a few years now. We have been developing our own leadership skills and finding out what we are best at. We continue to be good peer advocates for other people and each other. As Self Advocates we continue to attend many meetings and groups to represent the views and voices of other people with learning difficulties.



We all work with other groups in Shropshire, in the West Midlands and continue to have links with National groups.



During 2011 we have been working with other strong self advocates to set up Locality Based Leadership Teams. We have recruited people in the central, north and south regions of Shropshire.



South

In the South area we came up with the idea to support 6 new leaders called local leaders for the South.

We think that the new group is progressing well. They have already taken over some roles in helping with the South Taking Part meeting.



We are looking forward to help with training them with the other two areas of Shropshire in the summer.



Central

We have a very strong team of people in our area for Central in and out of services. We interviewed for 6 people. We stick to 3 main points at a time.



We helped get out important info about the bus passes. We want to help each other with travel training. We are planning to find out what people can do in their communities with their Personal Budgets.



North

We have a good team of people from our day services for the North; we would like to develop it with people from outside services to complete the team.

Our idea for 2012 is ACTION! Not so much words.

When people have a problem we want to do something about it. We want to help people through the changes coming up.

Taking Part Leadership Team Telford and Wrekin



In Telford and Wrekin our leaders are very busy going to all sorts of meetings and speaking up for others. Here's what they have to say about what they have been doing:



I have recently worked with the local authority to help them decide which service provider would be best to support people living at a local residential home in Telford.



I continue to represent Taking Part at national and regional meetings to find out what is happening across the country and share news about what is happening in Telford with other advocacy groups.



Stuart has enjoyed working with others in consultations about the future of disability services and enjoys his role as co-chair for Taking Part in Telford and Wrekin.



I have been working with Andy going to residential homes and advocating for people with profound and multiple learning disabilities since Christmas time last year.

I am still co-chair of the learning disability partnership board, we have speakers that come to our partnership board and we feed it back to others at our Taking Part committee.

I have worked for Taking Part for 8 years and love being part of the staff team.



Escape and Taking Party



Taking Part Supports regular Social Nights in Shrewsbury and Telford. The first Wednesday of most months we have Escape at the Hive in Shrewsbury. Then Escape is at Revival in Shrewsbury on the third Wednesday of most months. There were also some Taking Party events at St Georges Social Club in Telford last year.



All of these events provide an opportunity to meet up with or make new friends, gain social skills and have fun. People are sharing their stories about why they enjoy coming to Escape social nights. Now different people are coming to try it for themselves and more people are deciding to become 'Escape members.



Some of the special themes we had last year were:



- 'Brits By the Sea' for our BBQ
- 'Taking Part's Got Talent' - which was really well attended and gave us some fantastic performances.

We are now planning some exciting events in the future:



- 'Strictly Come Dancing'
- 'Gok's Got Fashion' night – with our very own Gok Gould.
- We will be having our regular summer BBQ as well.

Moving and Grooving

Moving and Grooving is a project run by Taking Part as part of the 'All In' Short Breaks activities across Shropshire.



'All In' Short Breaks is about providing after-school, weekend and school holiday events and activities for children and young people living in Shropshire with a disability or additional need. These Children need support to join in with these types of activities.



Moving and Grooving is a specialist team of project workers who support children to go to mainstream leisure centres and feel included and encourage them to join in sports activities like all other children.

Support is focused upon each child being able to learn, try new things, make friends and have fun. The needs of every child are looked at and support is provided to keep them safe, involved and active.



The Moving and Grooving team work very closely with parents and carers to better understand their children.



The Moving and Grooving team also work very closely with mainstream Leisure Centre Coaches to transfer skills to help develop their knowledge and understanding of disability issues.



The aim is that Leisure Centre Coaches gain confidence and can continue to work with young people with a range of disabilities once the Moving and Grooving team have moved on.



Over the past 12 months Moving and Grooving have support sports sessions at London Road Sports Centre, Sports Village Saturday Club and cycling and swimming at the Quarry.

Last December, the team also supported a Christmas Party at the sports village and everyone had great fun!



Together We Can



The performance group still meet each Friday to develop their performance skills. Since Together We Can was formed, friendships and relationships have blossomed and individuals have gained lots of self esteem.



Some of the members are now part of Taking Part's Leadership Group because their confidence has developed so much. They are able to contribute to meetings in a positive and constructive way.

The members of Together We Can have become very good self and peer advocates for others.



We have done a few different performances at different venues. We haven't had as much paid work this year compared to last, but this is just a sign of the times with budgets being cut everywhere.

The group have regular discussions about different issues that affect people with disabilities, we then use drama to act these out.



We use performance to advocate and share our experiences. Together We Can, has been very successful with 13 members attending every week.

Art Start & Art Cart

Art Start and Art Cart are part of the 'All In' Short Breaks activities across Shropshire. (Just like Moving and Grooving)



Sessions are still running on a Saturday Morning each month in Bridgnorth, Owesry and Shrewsbury. This day is very popular with parents as it gives them time go shopping, catch up on jobs, or just spend time with other family members.



We are advertising for new members as some of our regular members are now too old to attend. We still see plenty of other regular members at all three groups.



Some of the group numbers are quite small, but this works very well as some members have multiple needs and need one to one support. Having a smaller group means the atmosphere is much calmer and more time can be given to each person. This gives a good quality respite and Art workshop experience.



Different Art forms are used to communicate with each other, show expression and develop individual's creativity.



Some of the different art forms we have used throughout the year are

- Painting on canvas
- Model making
- Jewellery making
- Fun with food
- Circus skills
- Creating an indoor beach
- Asian dancing
- And much more.



We took part in local carnivals over the past 2 years and plan to do something similar this Summer This has proved to be very popular both with members and parents.



Members continue to grow in confidence and self esteem.

Staff Team



During 2011 Taking Part have continued to be very busy and in lots of demand for doing different work.

We have also seen some changes to staff teams in Shropshire and Telford. Some people have left Taking Part which has been really sad; some people have taken on new jobs, which has been exciting and we have been successful in having some new self advocates join us as leaders.



The types of work we do in Taking Part is changing all the time. We do all sorts of different advocacy. We give information to lots of people –people who use services and those who need to know more about what is in their community.

We help develop and deliver training on important subjects such as relationships, hate crime and staying safe.



We provide social events to help people meet each other and have new friendships and increase confidence about going out.

Taking Part still has offices in Shrewsbury and Telford.



The staff team in the Shrewsbury office have been involved in some new projects during 2011. We have had workshops about 'Face The Future' which were about how to use the internet and mobiles safely.



'I Can Do It Too' was a project working with parents and carers and younger people to advocate what people with learning difficulties can achieve as they get older. This project also listened to what young people want to do as they get older. We did some work with Severndale School.



We have continued to work with CAF (Common Assessment Framework) and helped develop the EAP (Emergency Action Plan) so that people, their carers and other services are able to help individuals when they have to go into hospital or in an emergency. This has been seen as a very good piece of work.



During the last year, we helped some people with Personal Budgets do their Support Plan. This is so that they could think about what they really wanted to do during their week – things that they would benefit from and help improve their lives.



The staff team in Telford have continued to help lots of different people with different issues which affect their lives. Sometimes these are difficult things and take time to sort out.



We also support a lot of people who live in the residential homes in Telford. This is to make sure that they are happy living where they do and that they are looked after properly.



We have been working with TCAT to give students a chance to say what they think about leaving school, going to college and what they want to learn.

Both teams continue to support people with learning difficulties be involved, included and listened to in all sorts of issues during their lives.



We continue to make information into easy read, run both offices looking after the paperwork, answering calls and emails and make sure that the money is looked after and spent properly.



We are always looking to develop new projects and involve new people in what we do.



During 2011 we have been working with other groups. We tell people what we do well and what we find out about what is happening in our local communities. By doing this we hope to help more people have their voices heard and be involved in making decisions about their lives.



Taking Part want people to:

- Have the Freedom to speak up and be involved



- Be treated fairly and equally



- Be encouraged to take some responsibility for themselves

• **Freedom** • **Fairness** • **Responsibility**

Accounts

Independent examiner's report to the trustees of Taking Part

I report on the accounts of the company for the year ended 31st March 2011.

Respective responsibilities of trustees and examiner

The trustees (who are also the directors of the company for the purposes of company law) are responsible for the preparation of the accounts. The trustees consider that an audit is not required for this year under section 43(2) of the Charities Act 1993 (the 1993 Act) and that an independent examination is needed.

Having satisfied myself that the charity is not subject to audit under company law and is eligible for independent examination, it is my responsibility to:

- examine the accounts under section 43 of the 1993 Act;
- to follow the procedures laid down in the general Directions given by the Charity Commission under section 43(7)(b) of the 1993 Act; and
- to state whether particular matters have come to my attention.

Basis of independent examiner's report

My examination was carried out in accordance with the general Directions given by the Charity Commission. An examination includes a review of the accounting records kept by the charity and a comparison of the accounts presented with those records. It also includes consideration of any unusual items or disclosures in the accounts, and seeking explanations from you as trustees concerning any such matters. The procedures undertaken do not provide all the evidence that would be required in an audit and consequently no opinion is given as to whether the accounts present a 'true and fair view' and the report is limited to those matters set out in the statement below.

Independent examiner's statement

In connection with my examination, no matter has come to my attention:

(1) which gives me reasonable cause to believe that in any material respect the requirements:

- to keep accounting records in accordance with section 386 of the Companies Act 2006; and
- to prepare accounts which accord with the accounting records, comply with the accounting requirements of section 396 of the Companies Act 2006 and with the methods and principles of the Statement of Recommended Practice: Accounting and Reporting by Charities

have not been met; or

(2) to which, in my opinion, attention should be drawn in order to enable a proper understanding of the accounts to be reached.

John Higson FCMA
Bank Accounts
Oak Ridge
Edgton
Craven Arms
Shropshire
SY7 8HW



13/01/2012

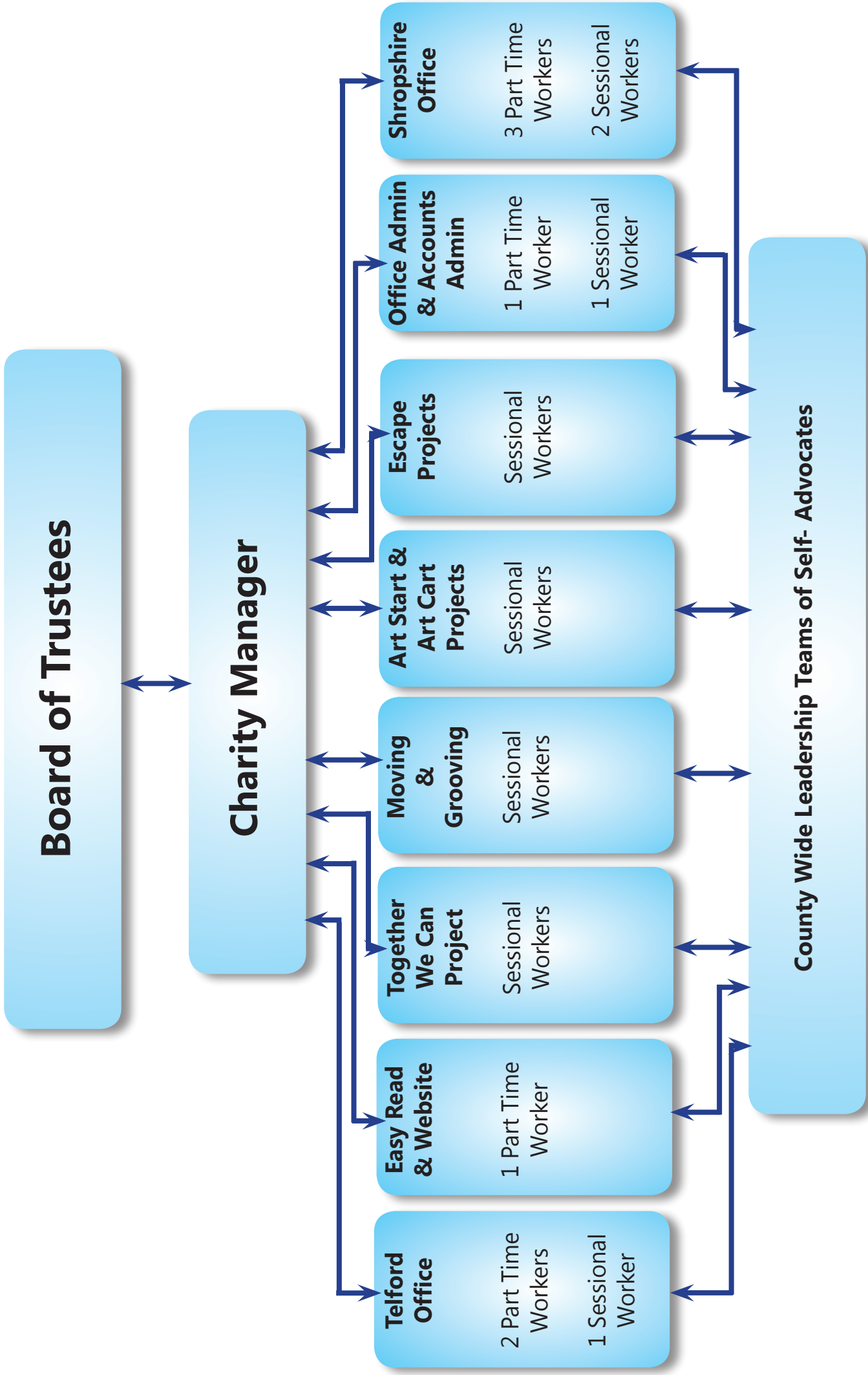
Accounts

TAKING PART

Statement of Financial Activities (incorporating an Income and Expenditure Account)
Year ended 31st March 2011

		2011			2010
		Unrestricted	Restricted	Total	Total
Incoming Resources					
From generated funds	Voluntary income Activities		370528	370528	
	Investment income				2839
From Charitable Activities					295464
Other					
Total incoming resources			370528	370528	298303
Resources Expended					
Costs of generating funds	Voluntary income costs				
	Fundraising costs				
	Managing investments				
Charitable activities			358173	358173	284790
Governance Costs					2230
Other					2408
Total resources expended			358173	358173	289428
Net incoming/outgoing resources before transfers -			12355	12355	8875
Transfers					
Net Movements in funds	-		12355	12355	8875
Funds Brought Forward		95159	93591	188750	179875
Funds Carried Forward		95159	105946	201105	188750

Organisation Chart





Changing Times; Changing Lives

Taking Part:

Independent services for people with learning difficulties

www.takingpart.co.uk

Shrewsbury Office:

Unit 2 Hartley Business Centre

Monkmoor

Shrewsbury. SY2 5ST

Telephone: 01743 363399

Email: takingpart@takingpart.co.uk

Telford Office:

The Lakeside Centre

Grange Avenue

Stirchley, Telford. TF3 1ET

Telephone: 01952 597434

Email: onestopshop@takingpart.co.uk

Registered Charity Number: 1092033

