

Celebrating 20 Years
1994 - 2014



Taking Part



Annual
Report
2013-2014





Contents: What is inside

Section	Title	Page Number
1	A Message from the Trustees	1 - 2
2	Telford Work	3 - 6
3	Shropshire Work	7 - 8
4	Shropshire and Telford and Wrekin Work	9 - 14
5	Accounts	15
6	Organisation Chart	16

A Message from the Trustees



Over the last year, health and social services have had to keep saving more money. It has been a year for big changes and seeing how it affects people with learning difficulties.

The Government have also been making changes to how benefits are paid. Taking Part staff have been working hard to keep up with the changes and still provide advocacy, information, advice and guidance for our clients in Shropshire, Telford and Wrekin



Taking Part also had to look at how we work and how we can change the way we do things to save money but still provide a great service.



We have looked at different ways to get funding and worked with other organisations on different projects.

As money for advocacy gets harder to find in the future, we will have to work on more and different projects with other organisations.



It was a challenging year because of all of the changes. Thanks to our hard working staff team, we still provided the service people needed when they needed it.

Taking Part will do everything we can to keep our much needed services going through all of the changes and challenges.

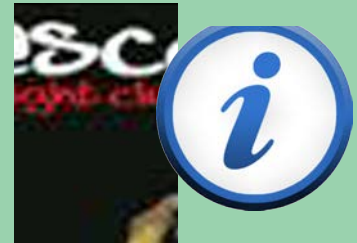
Advocacy



Escape



Information



Signposting



Partnership Working



Project Work



Telford and Wrekin Work



Issue Based Advocacy

We still support people on a 1:1 basis when they need support to speak up for themselves about certain things in their lives.



From April 2013 to March 2014 we worked with 96 people in total. Some people had lots of issues they needed help with and we had to work with them for a long time. We continue to work with some of these people. We get new referrals all the time.



Taking Part Committee Meetings

Our Committee Meetings take place every other month and have been well attended this year.



We have used our committee meetings to share information about Taking Part, Partnership Boards and the changes in services. We have talked about the Budget, the Local Account, the Health Self-Assessment and New Options proposals.



The committee meetings continue to be a useful way of getting individuals and group views of how people feel about their services and also living in Telford.



We have some good peer advocates who help a lot in the meetings. Our Committee Meetings are co-chaired by 2 self-advocates.



Citizen Advocacy

Our excellent volunteer citizen advocates have been doing their role for 8 years. They have helped their partners achieve and experience great things and have been their voice when needed.



New Options

Four members of the Taking Part Staff team were really involved in the consultation events for the New Options ideas in Telford – changes to adult social care. There were about 90 service users in total who went to the 6 different sessions.



We supported individuals to ask questions and give their views on the ideas. The sessions were quite long and there was a lot to talk about.



We worked with the council's Community and Engagement team to help them find out what people thought of the ideas.



We will continue to work with the council about how they take the ideas and thoughts from New Options forward. We hope to be supporting people during their annual reviews.

Information, Advice and Guidance (IAG) Working Group



Telford and Wrekin Council brought together a group of organisations who provide Information, Advice and Guidance.



The group was to find out what is currently available, and how to make it easier for people to know about it. Then we looked at a plan for these agencies to work together to best meet the needs of all people in Telford.



Taking Part helped develop the Information, Advice and Guidance Plan and Charter – a way of working.



There have been 2 'Working Together Events' – one in September 2013 and one in January 2014. Taking Part went to both events. Taking Part has been very involved in this work and it has been good to work with other organisations and the Council.



Residential Homes

We continue to visit 12 residential homes in Telford every 2 months.

Some of the service providers have been seeing changes of their own in terms of what they provide and how they best support residents.



We have been supporting these changes and been able speak up for those who are unable speak up for themselves.

2



Shropshire Work



Coffee Chat

During the last year we did 76 Coffee Chats across 17 Day Opportunities in Shropshire. The meetings keep people up to date of local developments throughout Shropshire.



Using a regular agenda makes sure that information is shared fairly. Service users and staff like the easy read minutes. They are a good way to record things talked about and actions needed.



Transformation Training

We supported 21 people with Transformation Training in April 2013. We did more meetings in 2012.

Some service users had some concerns and Taking Part were able to help people understand what the training was about.



We also helped people to cope with the changes and outcomes of reviews and using personal budgets.



One Page Profiles

To help people think about moving on and trying new things, we worked with a lot of people to do a One Page Profile – this includes all things in their lives.

A user friendly One Page Profile was made which helped people in their reviews.



Operational Meetings

Taking Part continue to have meetings with key staff of the Council to talk about work and changes in funding and services.

These meetings help the Council to become aware of any concerns we know about and help us keep people informed of what is happening without big meetings. These meetings have been very important this past year with all the changes that have happened.



Short Breaks Projects

Both of our children's projects continue to be funded by Children's Services through the Short Breaks scheme. Moving and Grooving and Art Start feature as part of the Shropshire 'All In' Programme for disabled children. These projects offer respite for families and fun and meaningful activities for the children involved.



Shropshire and Telford and Wrekin Work

Learning Disability Partnership Board (LDPB)



Taking Part continue to play an important role in supporting service users to take part in the LDPB meetings as well as contributing to discussions and work at the meetings.



We have been members of the LDPB since they first began. We have a strong presence at both Shropshire Executive and Telford Learning Disability Partnership Boards.



Each LDPB is co-chaired by a self-advocate from Taking Part.



Self-Advocates

We have a main group of 10 self-advocates in Taking Part across Shropshire and Telford. They support events, help out with partnership working and represent other people with learning difficulties at a range of meetings.



The self-advocates arrange to meet up as a group on their own which is great. They are encouraged and empowered to become responsible citizens and good peer-advocates.



Interview Panels

Taking Part advocates support self-advocates to be on interview panels for jobs with the council and health services.

This is seen as good practice as service users are the ones who use services and often ask questions which professionals may not feel they can ask.



Health Programme Board

This group has been looking at health issues for people who live in Shropshire including Telford. It has proved to be an excellent working group to take forward the wide range of health issues for our client group.



Taking Part has played a key part in the development of the Winterbourne Action Plan, taking forward Confidential Inquiry into Premature Deaths of People with Learning Disabilities (CIPOLD) recommendations and collection of information for Health Self Assessment Framework (SAF).



We have links into the National Engagement Strategy Group for Winterbourne. We have also been able to show and share the successes and ways of working we have taken in Shropshire, at a national level.



Wider health meetings with the Clinical Commissioning Group (CCG) leads have made sure that our client group are having their views and voices taken into account – a positive outcome is 'Ask the Question' DVD and extra work done at the request of CCG leads.



Easy Read

We continue to produce our own minutes of meetings for service users in Easy Read, and also complete and update the Action Log for Partnership Boards.



As part of our monitoring processes, this year we have developed a range of evaluation questionnaires – forms where you can tell us what you like and do not like and a consent form.



Staff Induction

When staff are recruited into either the local authority or health services we provide an overview of our service and tell new staff what we do as part of their training for their job.

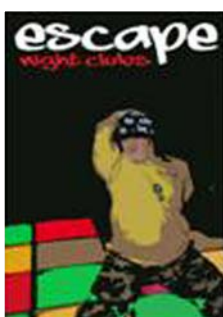


This has proved to be useful when new social workers and nurses have come to work in learning disability services.

Forums of Interest and other related meetings



Taking Part has been involved in lots of different meetings. As things change we need to work with other agencies so that we can share our experiences, knowledge and information. This is really important as things are changing so much and so fast. By working together we can help each other and the people who use our services.



Escape

Our Social Nights are the highlight of the week for a lot of people who join Taking Part either at the Hive or our nightclub night. They help people get out to meet up with friends and make new friendships whilst having a good time.



People make their own way there and back and have got some new skills from travelling alone or with friends.



People from across the whole of Shropshire and Telford come to our social nights. They are just so popular and everyone has a good time.



Shared Lives Scheme

Taking Part Advocates from Shropshire and Telford are involved in the selection and approval of Shared Lives carers for both Shropshire and Telford and Wrekin local authorities. Meetings take place on a regular basis when there are new carers to be considered or just changes to be made.



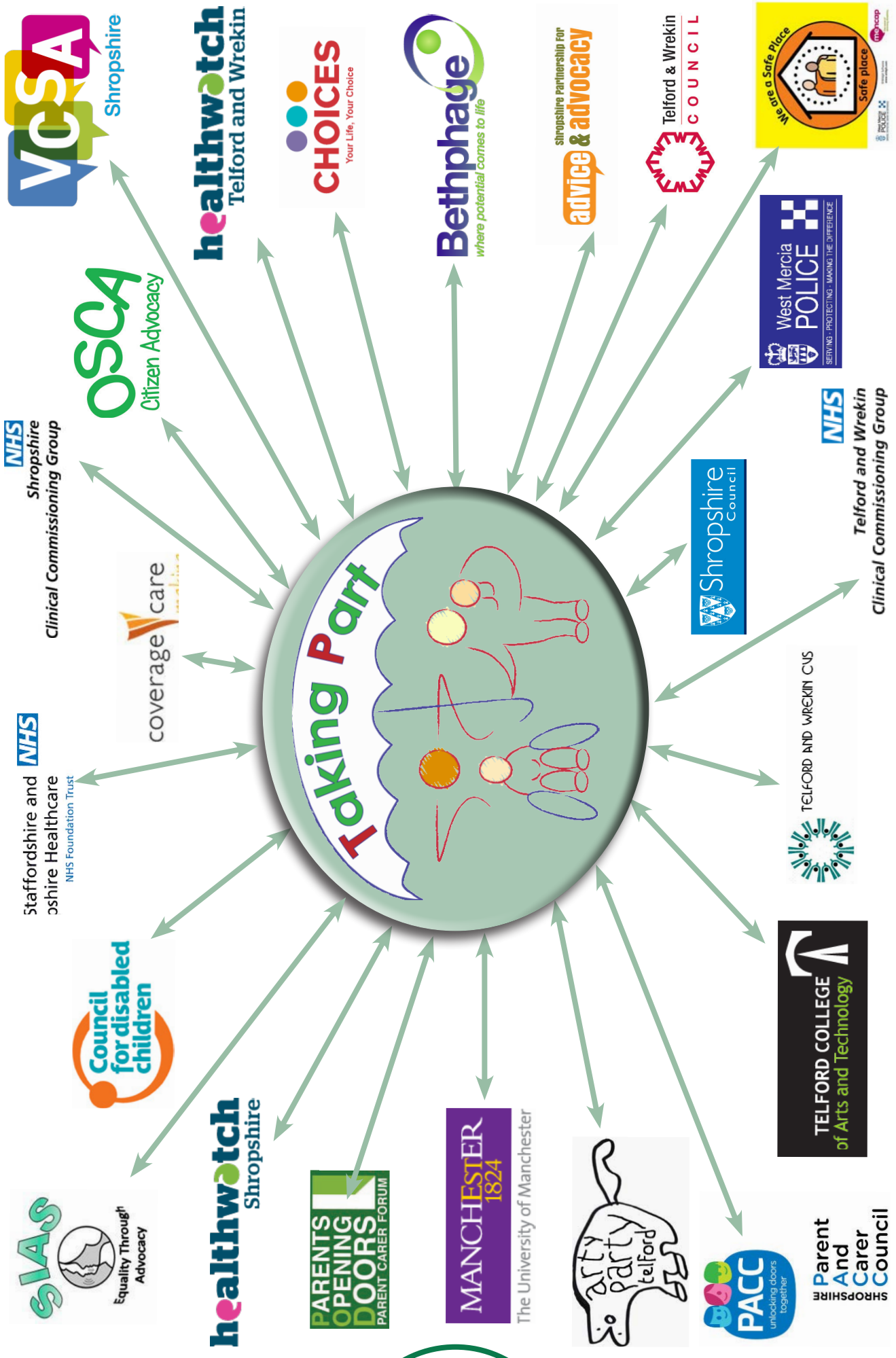
Conferences and Events

We continue to go to conferences that we feel we will gain information from or take information to. We take the opportunity of promoting Taking Part at as many events and market stall opportunities as possible.



Partnership Work

Our partnership work with other agencies and organisations continues to grow each year. Take a look at the next page to see who we worked with during 2013/2014.



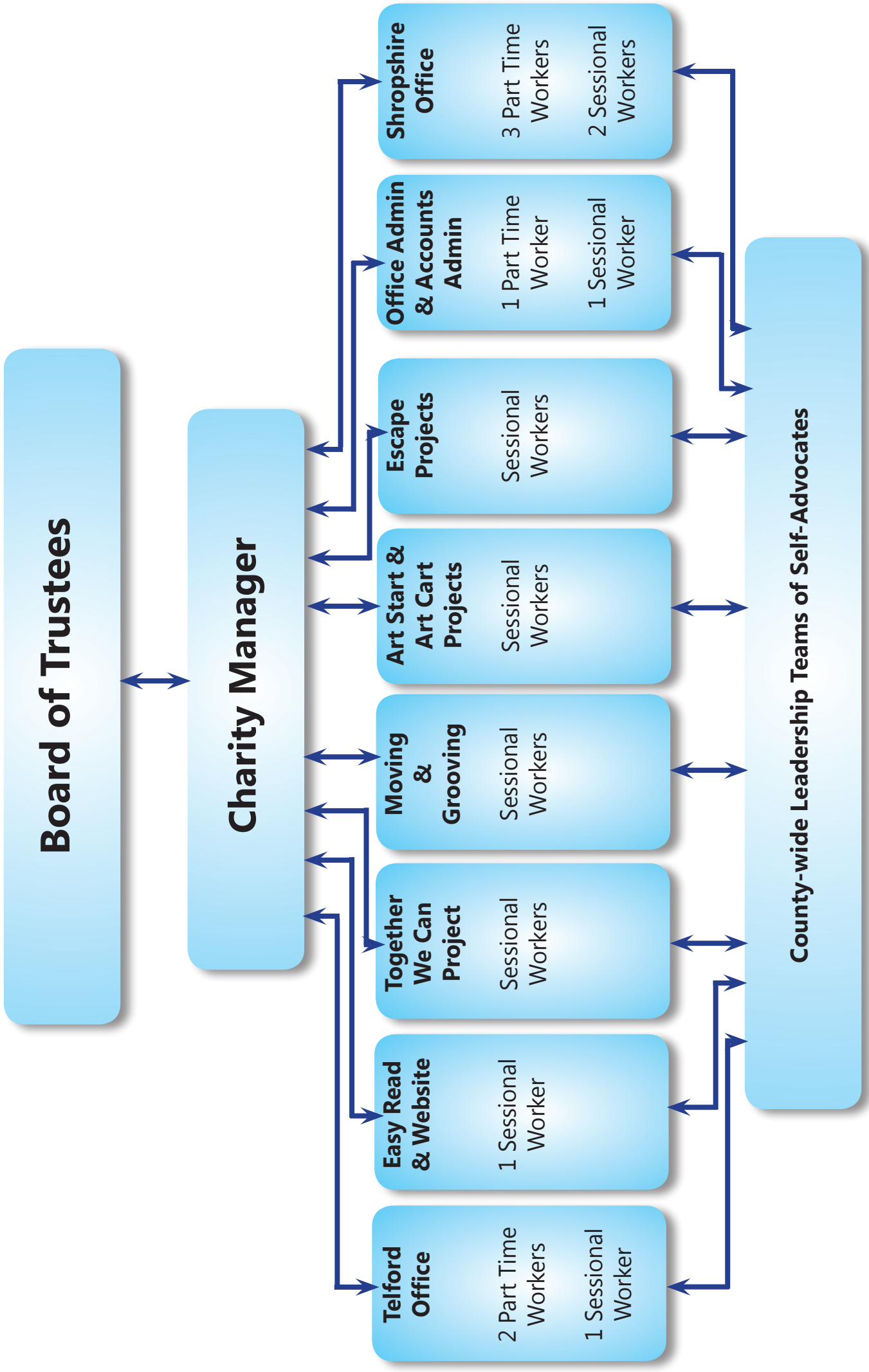
Accounts

Taking Part
Statement of Financial Activities
for the period 1st April 2012 to 31st March 2013

	Unrestricted Money £	Restricted Money £	2013 £	2012 £
Money from charitable activities	260,717	-	260,717	257,212
Grants and Contracts				
Money Spent				
Charitable Activities	237,078	-	237,078	261,100
Total Money Spent	237,078	-	237,078	261,100
Money Left Over	23,639	-	23,639	(3,888)



Organisation Chart





Changing Times; Changing Lives

Taking Part:

Independent services for people with learning difficulties

www.takingpart.co.uk

Shrewsbury Office:

Louise House

Roman Road

Shrewsbury. SY3 9JN

Telephone: 01743 363399

Email: takingpart@takingpart.co.uk

Telford Office:

The Lakeside Centre

Grange Avenue

Stirchley, Telford. TF3 1ET

Telephone: 01952 597434

Email: onestopshop@takingpart.co.uk

Registered Charity Number: 1092033

Company Registration Number Number: 04362949



Find us on

Facebook

www.facebook.com/takingpart



Follow us on

Twitter

www.twitter.com/takingpart