

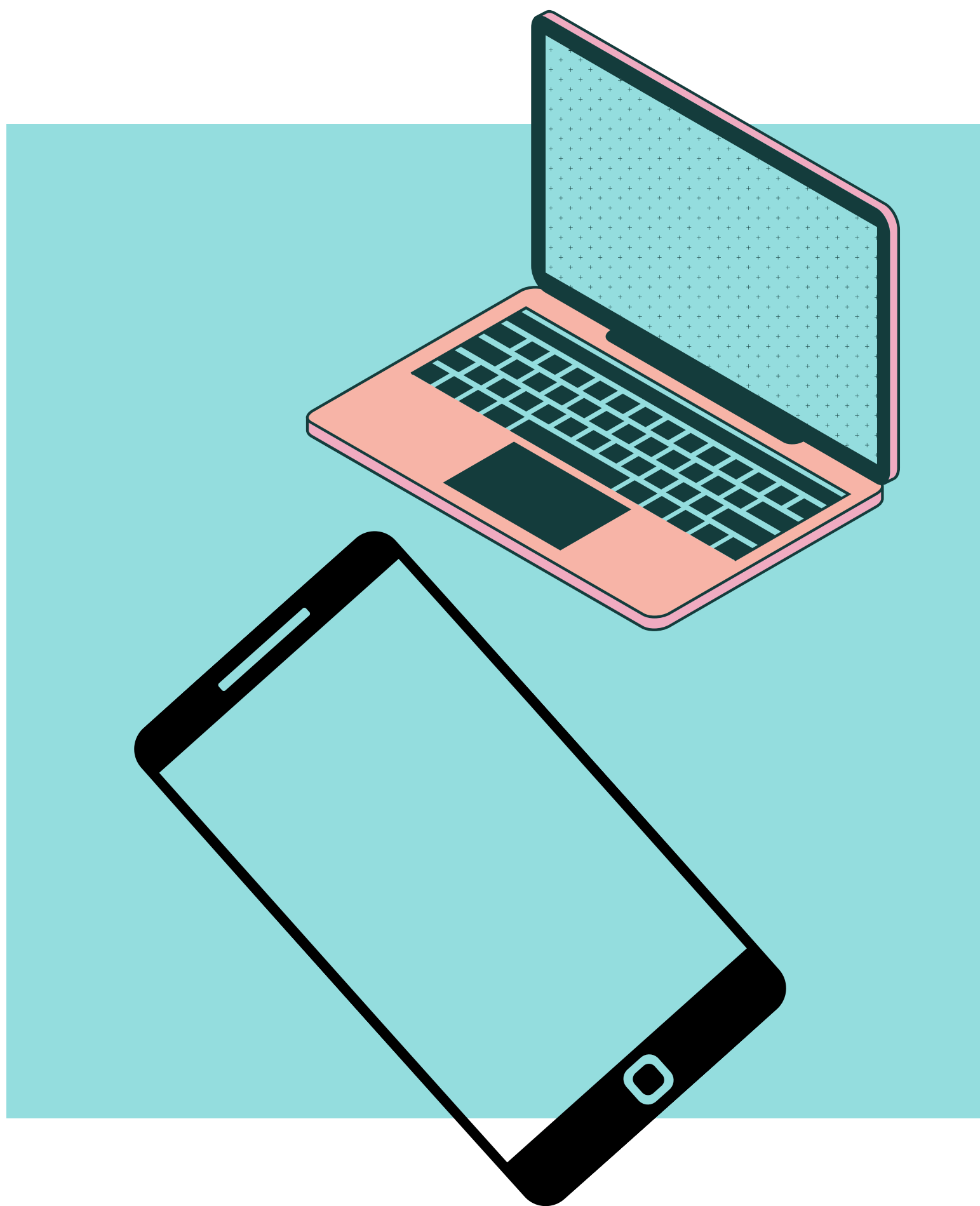


Funded by:

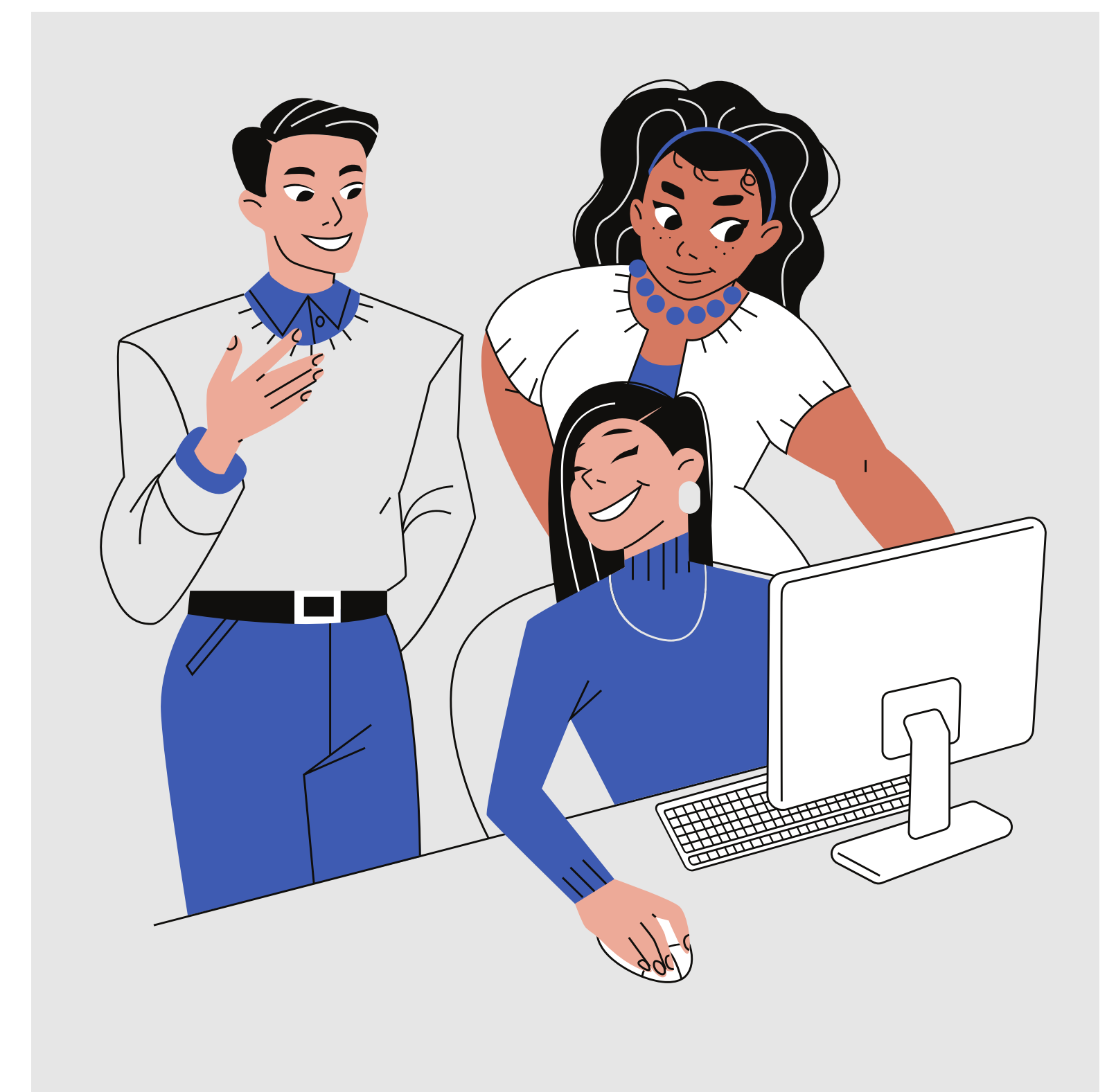


# Taking Part Group Digital Skills Sessions

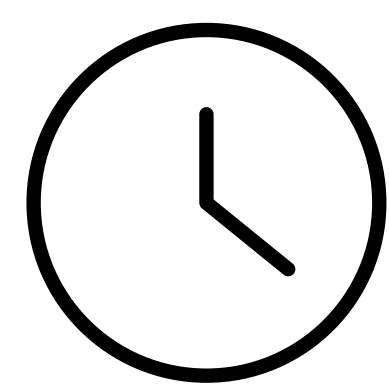
For adults with a learning disability living in Shropshire.



We support people to feel more comfortable using mobile phones, tablets and laptops.



and times



Friday 3rd and Friday 17th May 2024,  
10:30am - 12:00pm



Location

The Lantern Library, Meadow Farm Drive,  
Sundorne, Shrewsbury, SY1 4NG

Cost



Free



Who will be there?

- Taking Part staff
- Volunteers
- Guest speakers

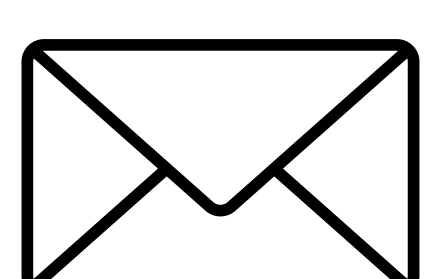


If you have not got a device we might be able to help you to get one.

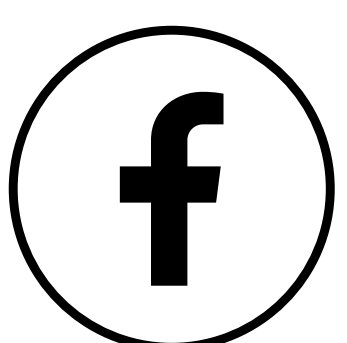
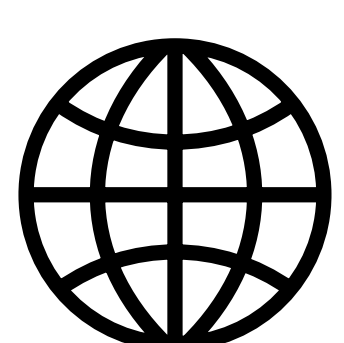
**Join us or contact us to find out more!**



01743 363399. WhatsApp/text 07397 64 66 08



takingpart@takingpart.co.uk



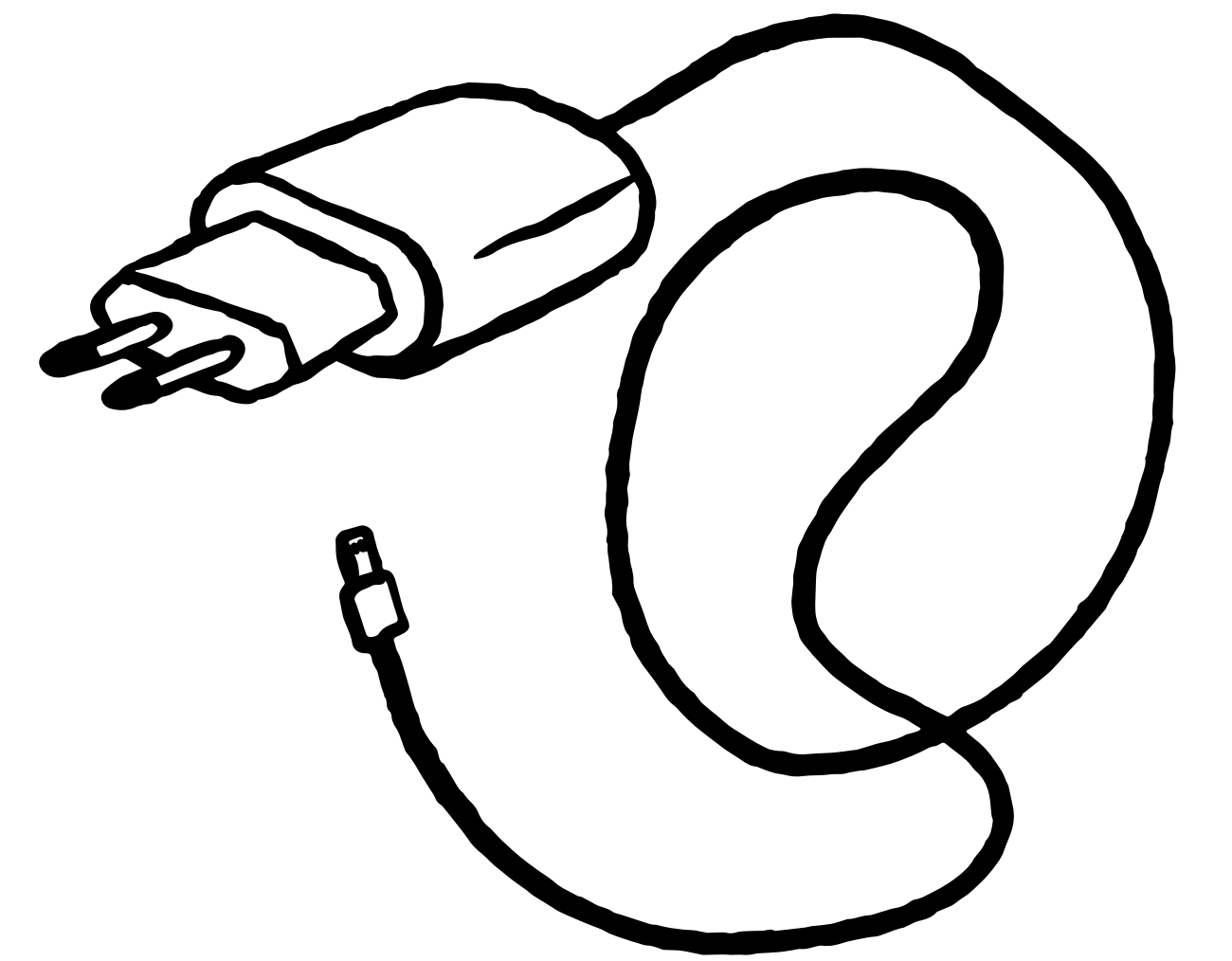
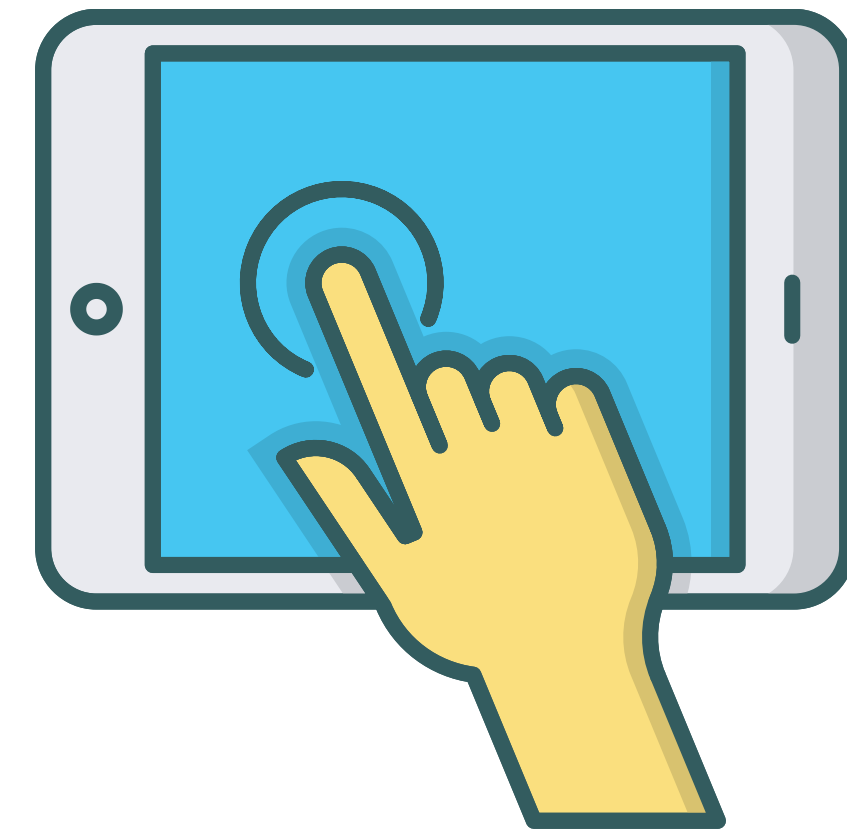
Future dates will be added to our Facebook page and website.  
[www.takingpart.co.uk](http://www.takingpart.co.uk)



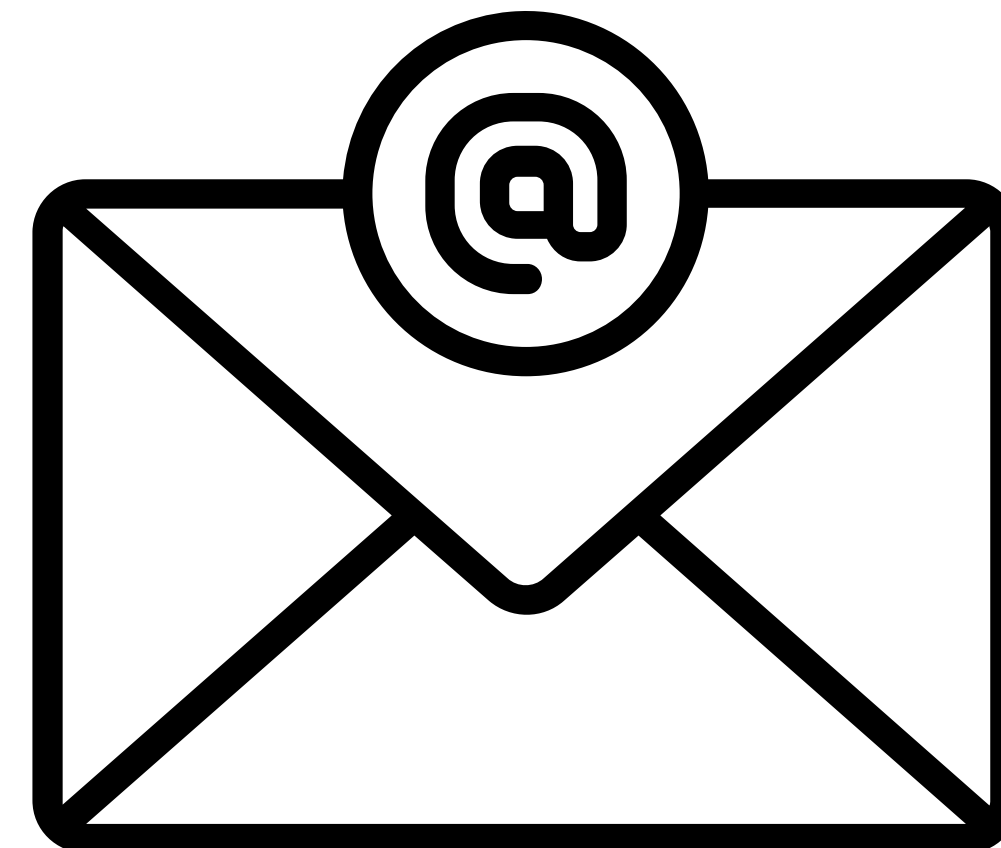


We might discuss the following during the session(s):

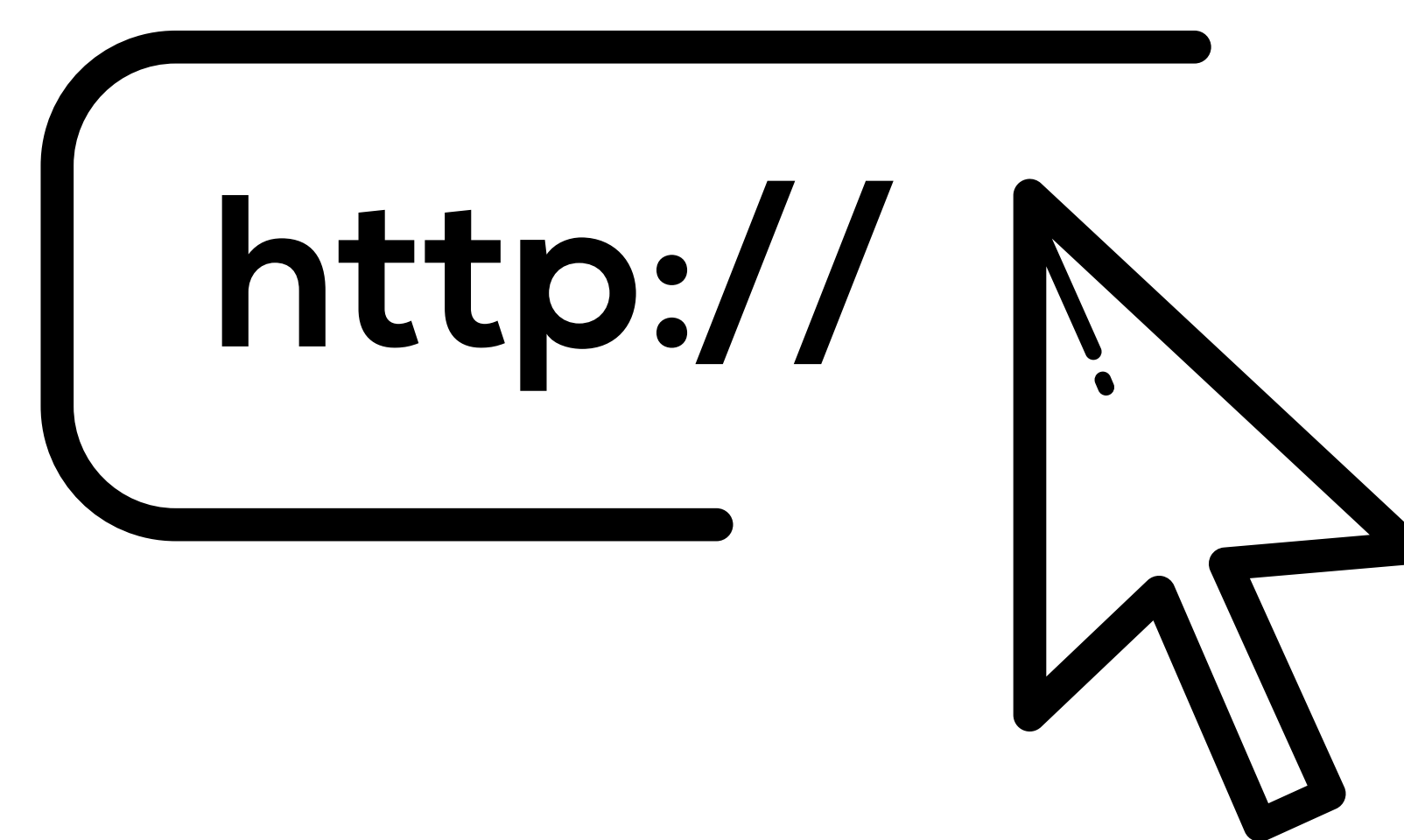
**Getting Started**



**Emails**



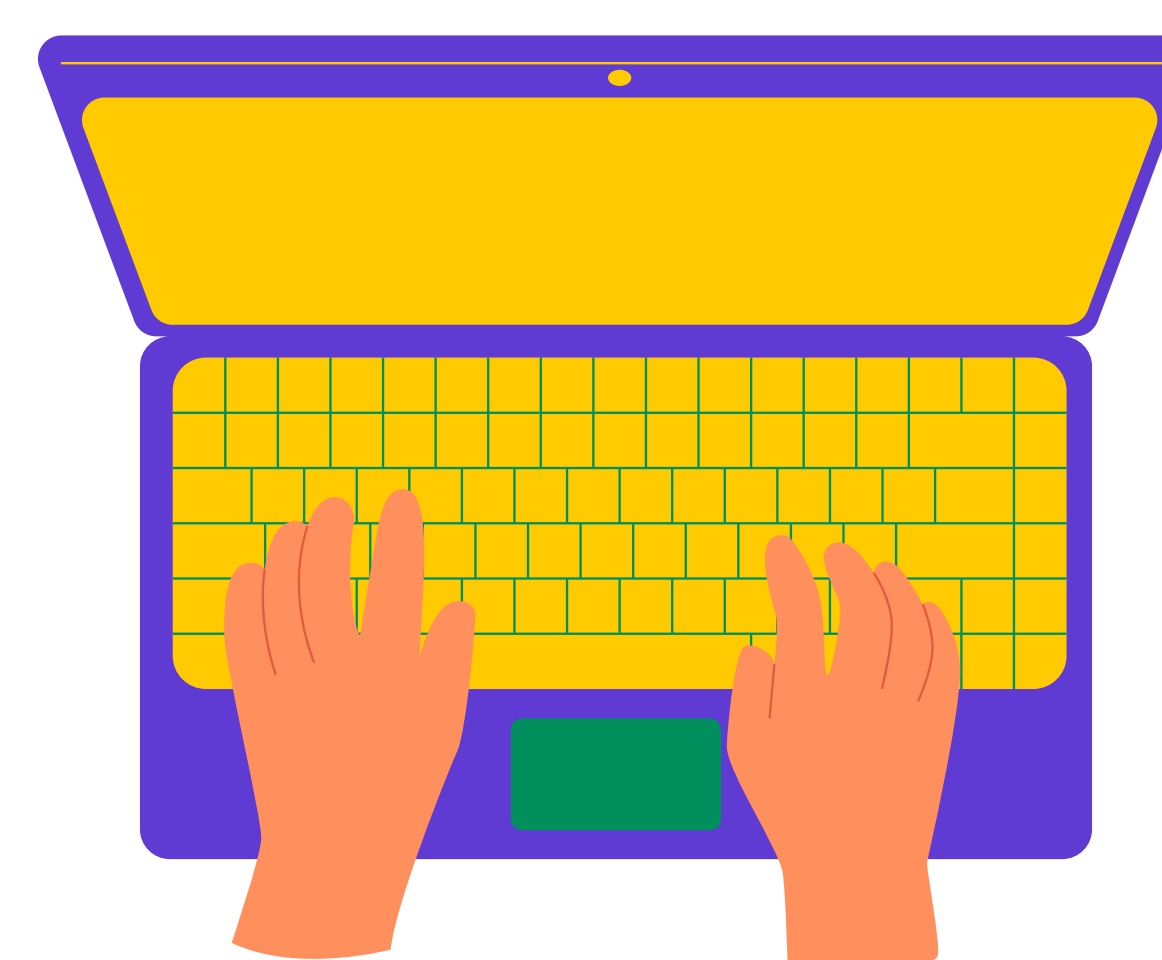
**Internet**



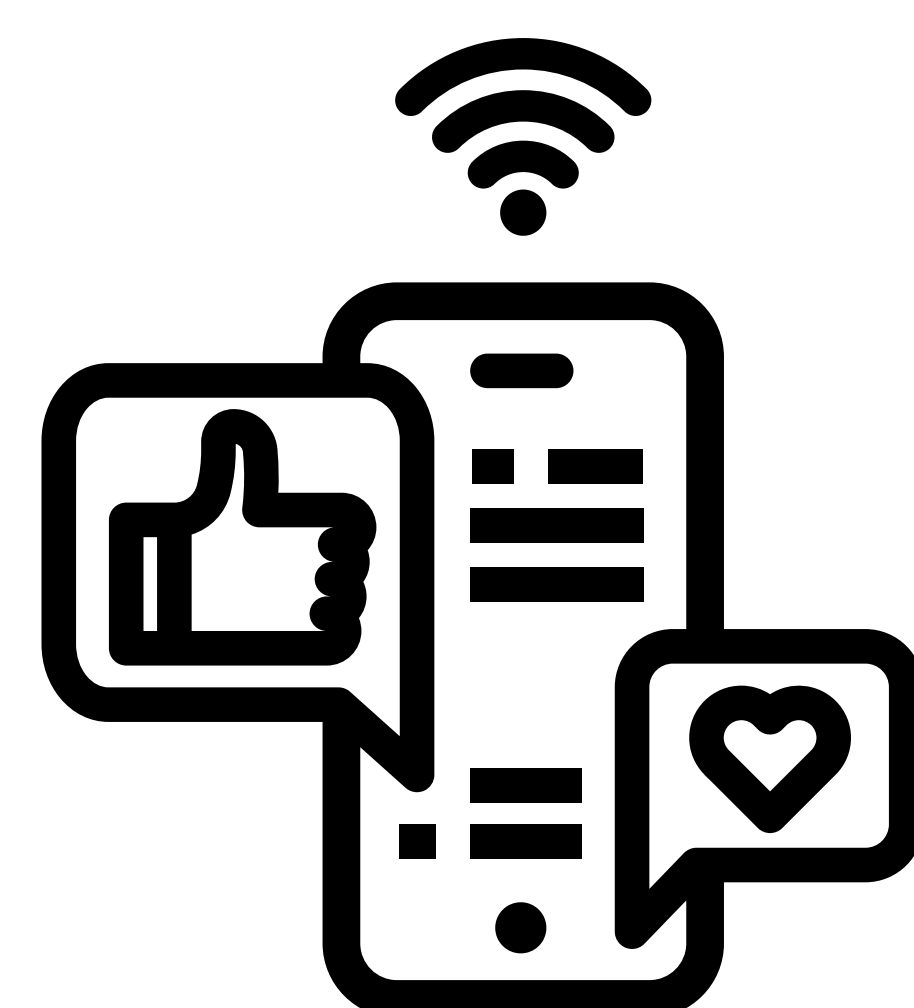
**Staying Safe**



**Documents & Storage**



**Keeping in Touch**



**Photos**



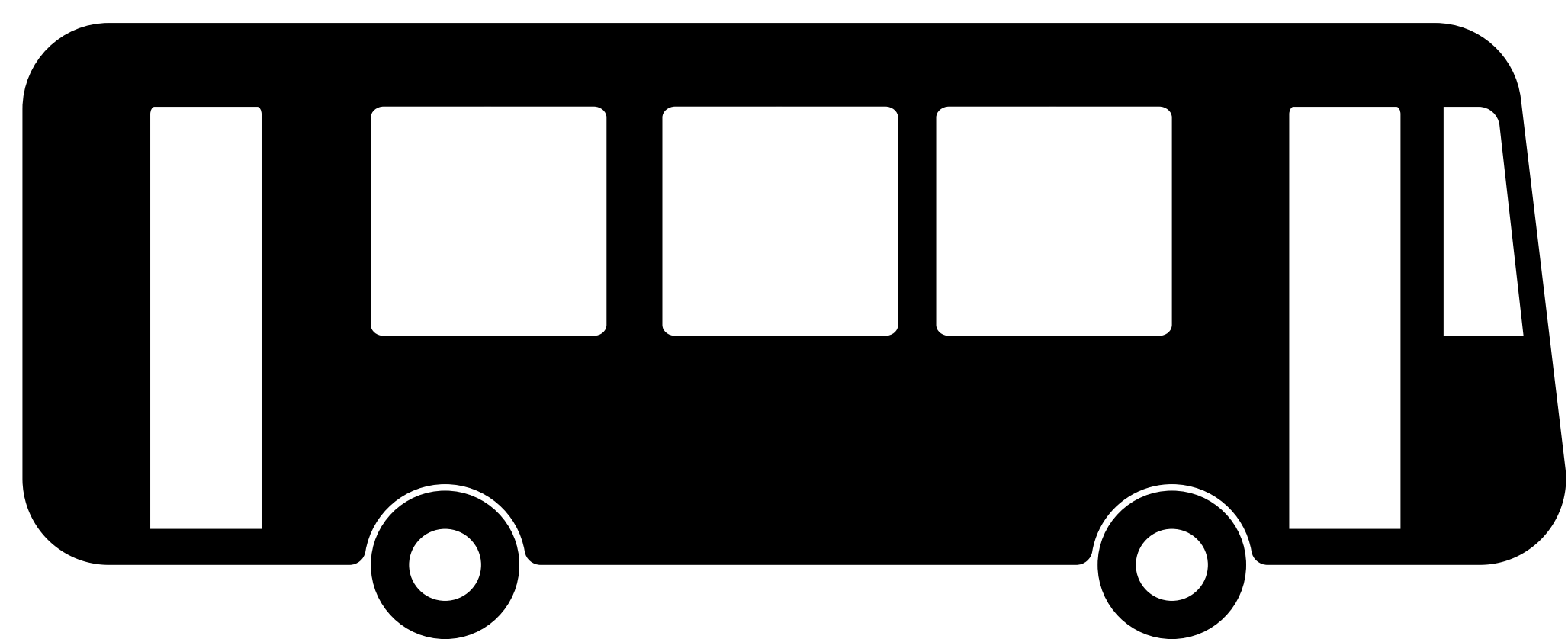


# How to get to The Lantern (SY1 4NG)

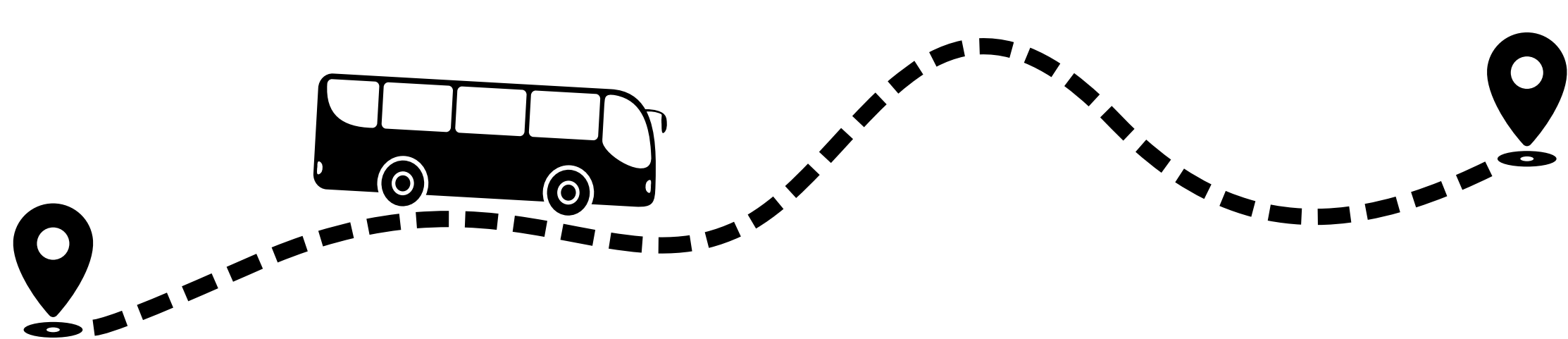
This is the address:



The Lantern Library,  
Meadow Farm Drive,  
Sundorne,  
Shrewsbury,  
SY1 4NG.



Take bus 25 from Shrewsbury  
Bus Station (Stand J).



The bus will drive past The  
Lantern.



This is a picture of the outside  
of The Lantern.

There is a small free car park.

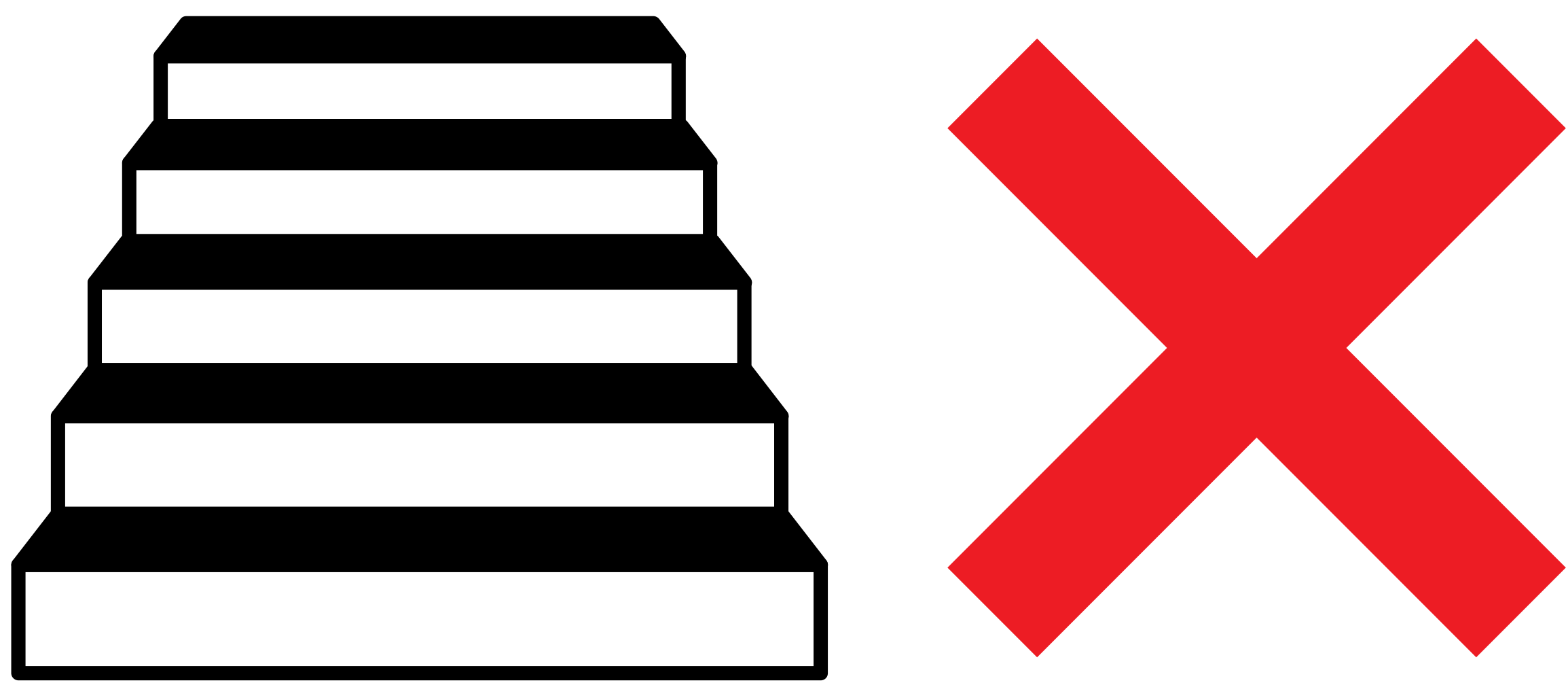


Changing Times, Changing Lives

# How to get to The Lantern (SY1 4NG)



We will be in the Library.



There are no steps in the part of the building we will be using.



There is a café there.