

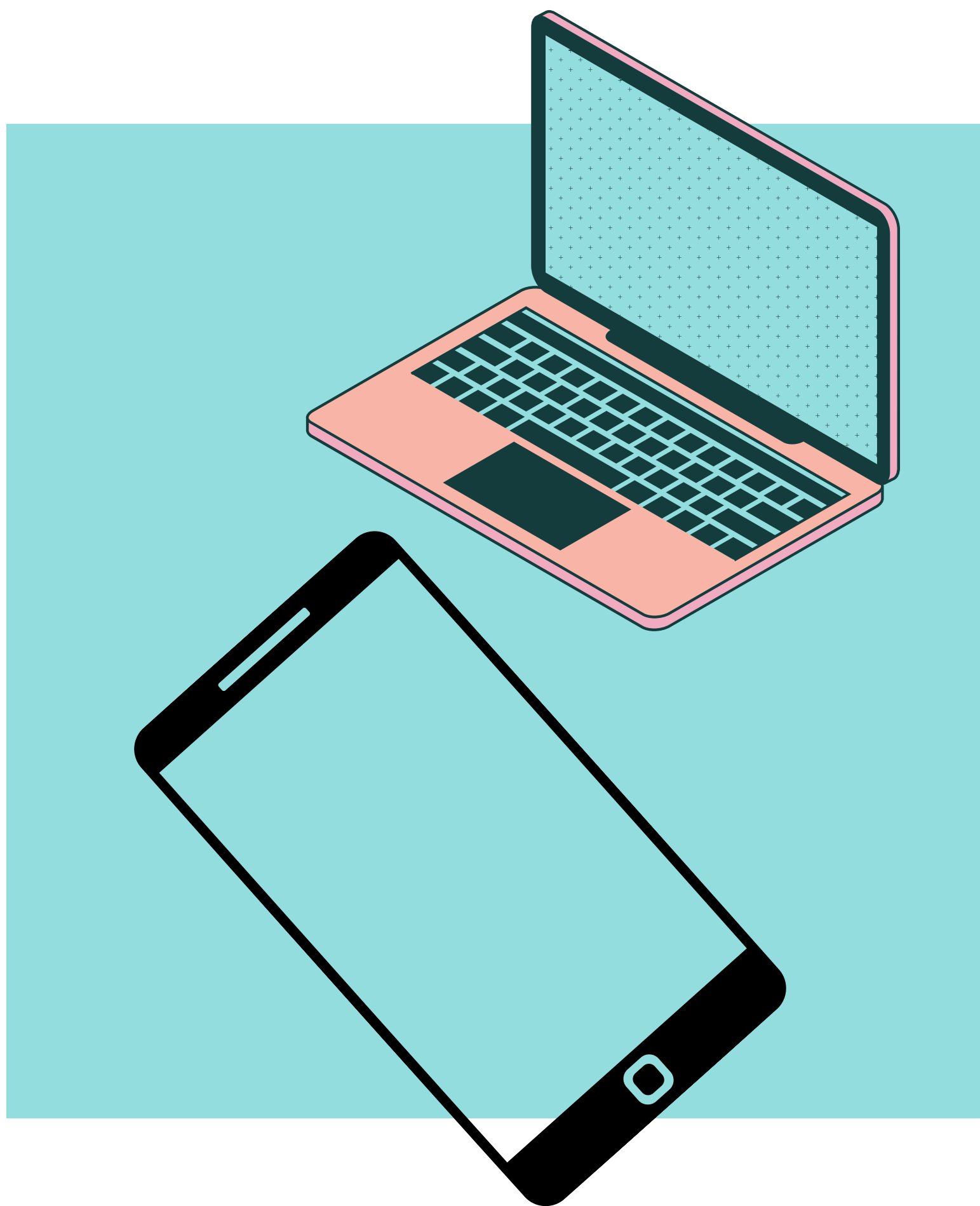


Funded by:

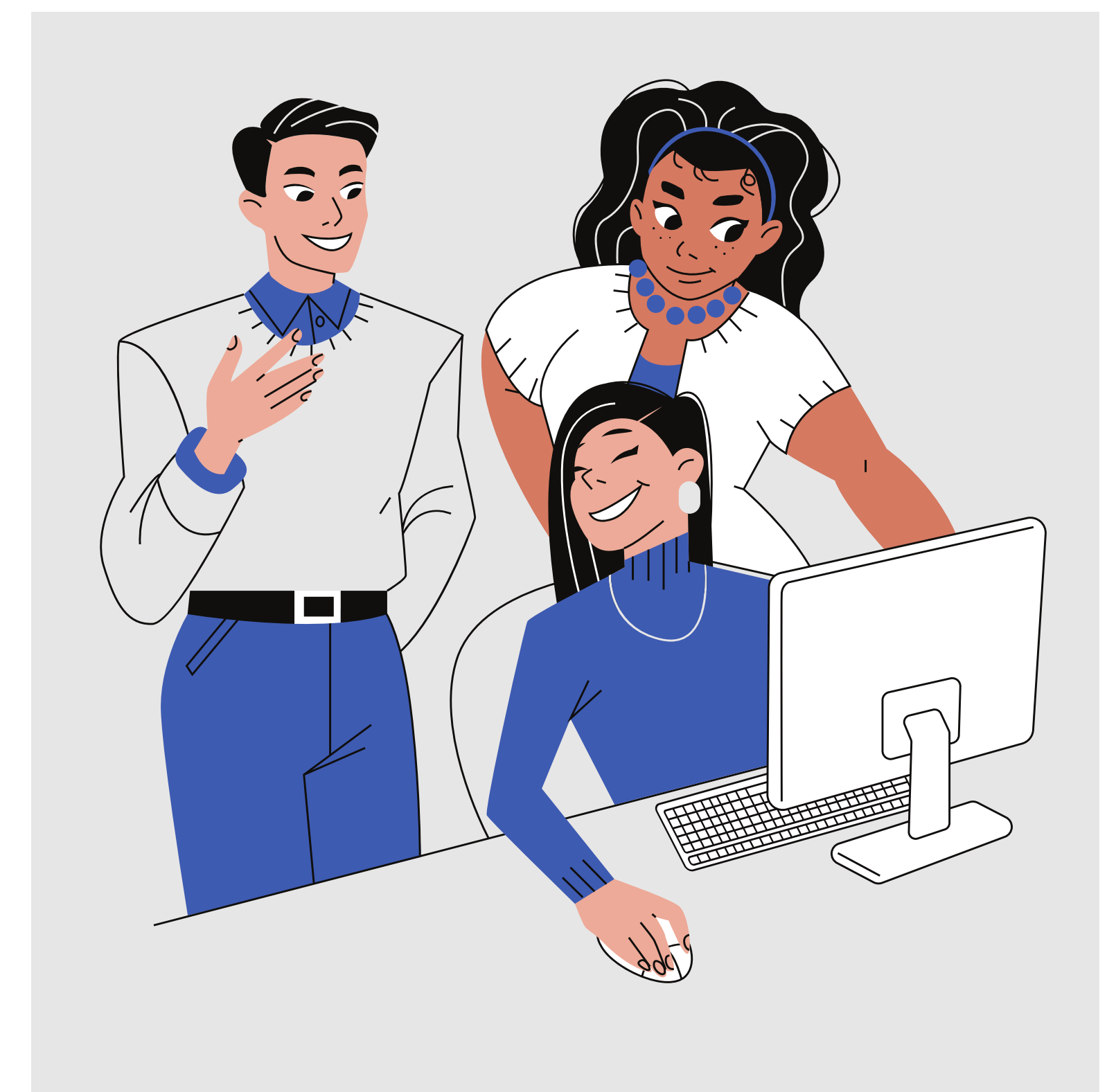


Taking Part Group Digital Skills Sessions

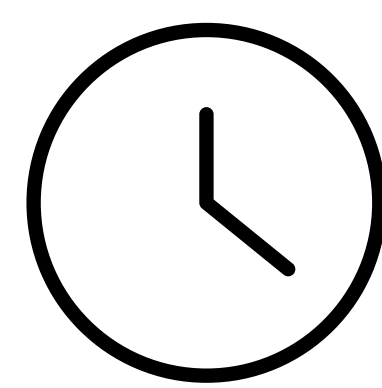
For adults with a learning disability living in Shropshire.



We support people to feel more comfortable using mobile phones, tablets and laptops.



and times



Friday 10th and Friday 17th May 2024,
1:30pm - 3:00pm



Location

Tesco Extra community space, Cattle Market,
Battlefield Road, Shrewsbury, SY1 4HA

Cost



Free



Who will be there?

- Taking Part staff
- Volunteers
- Guest speakers

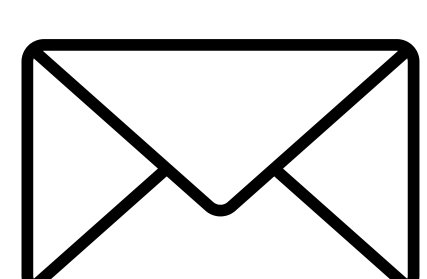


If you have not got a device we might be able to help you to get one.

Join us or contact us to find out more!



01743 363399. WhatsApp/text 07397 64 66 08



takingpart@takingpart.co.uk

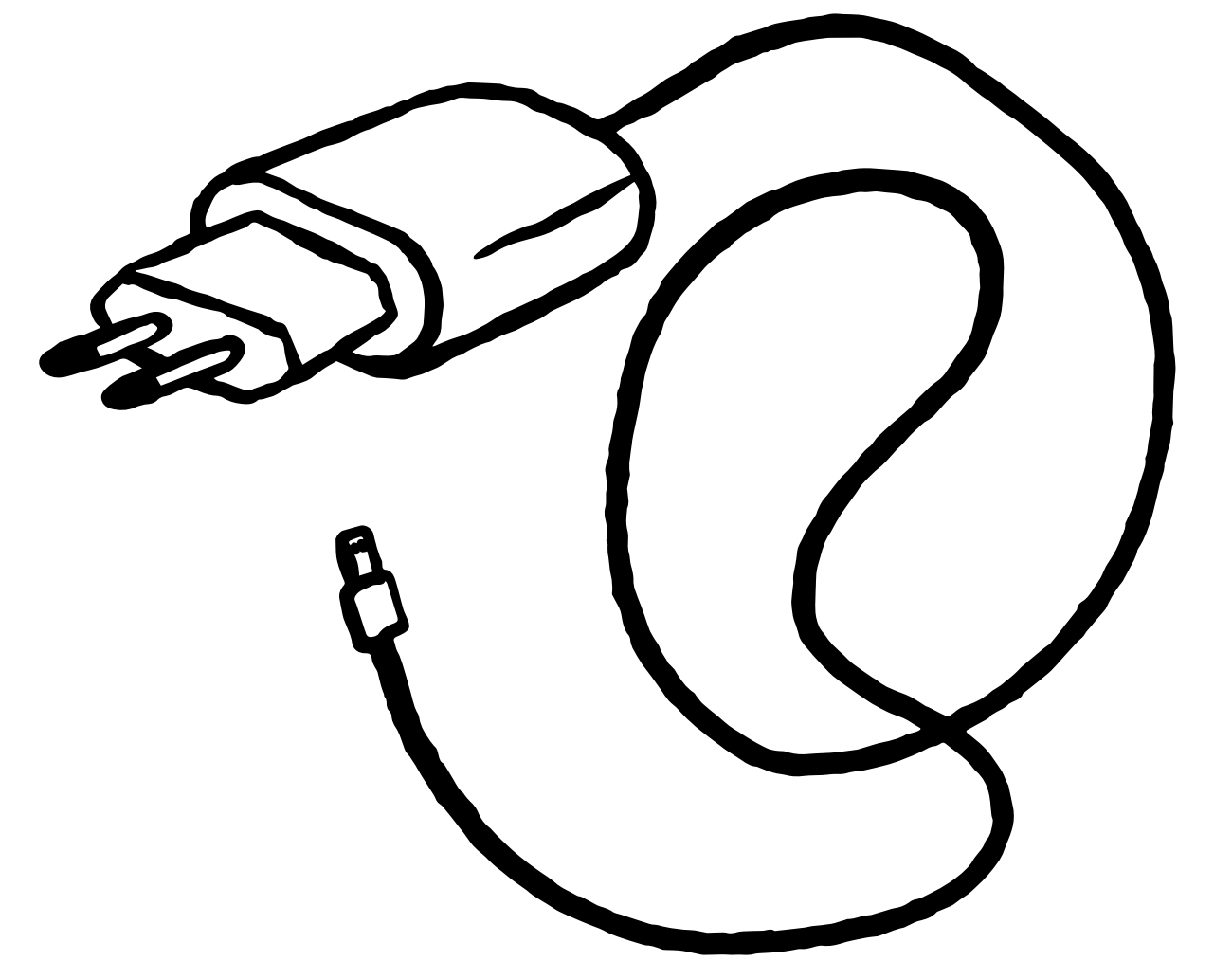
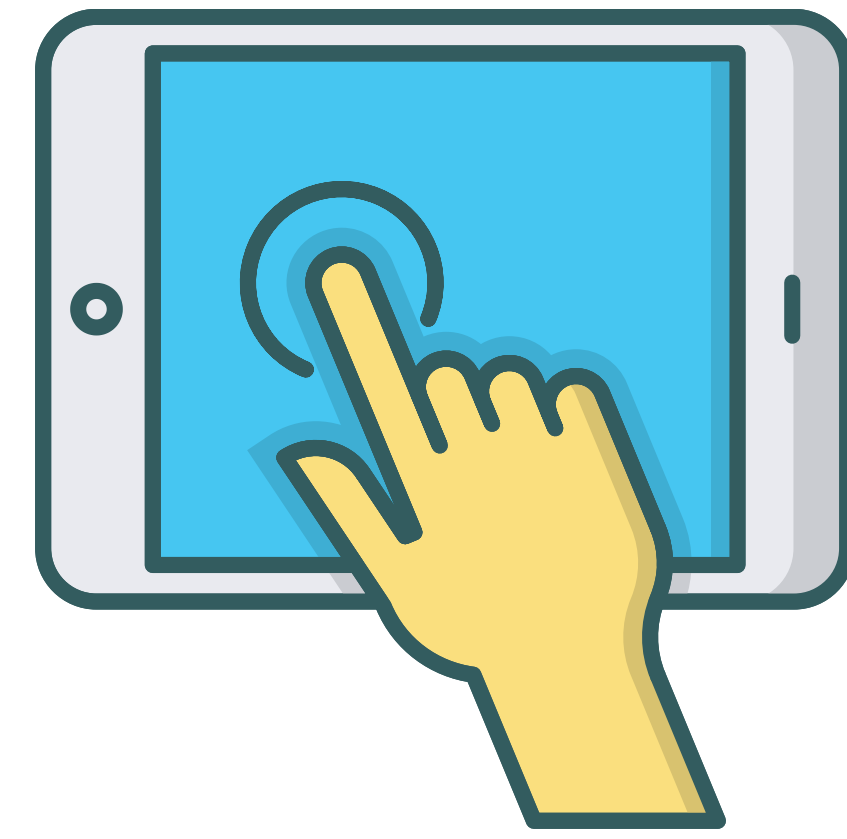


Future dates will be added to our Facebook page and website.
www.takingpart.co.uk

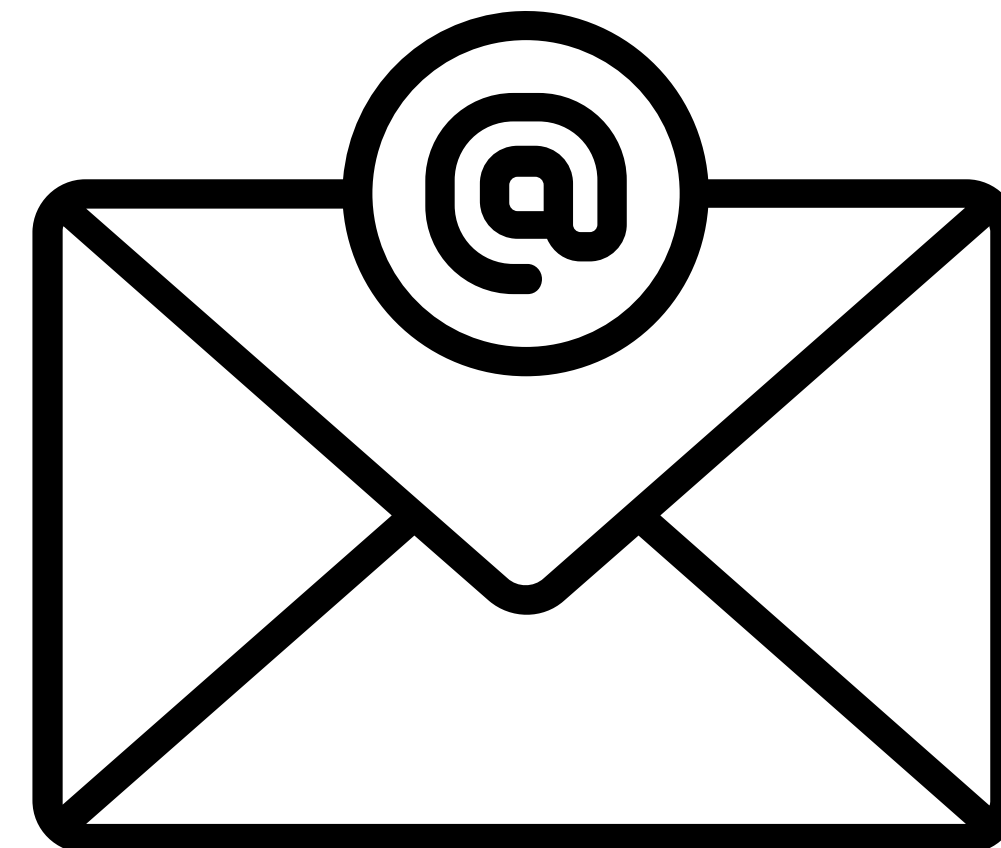


We might discuss the following during the session(s):

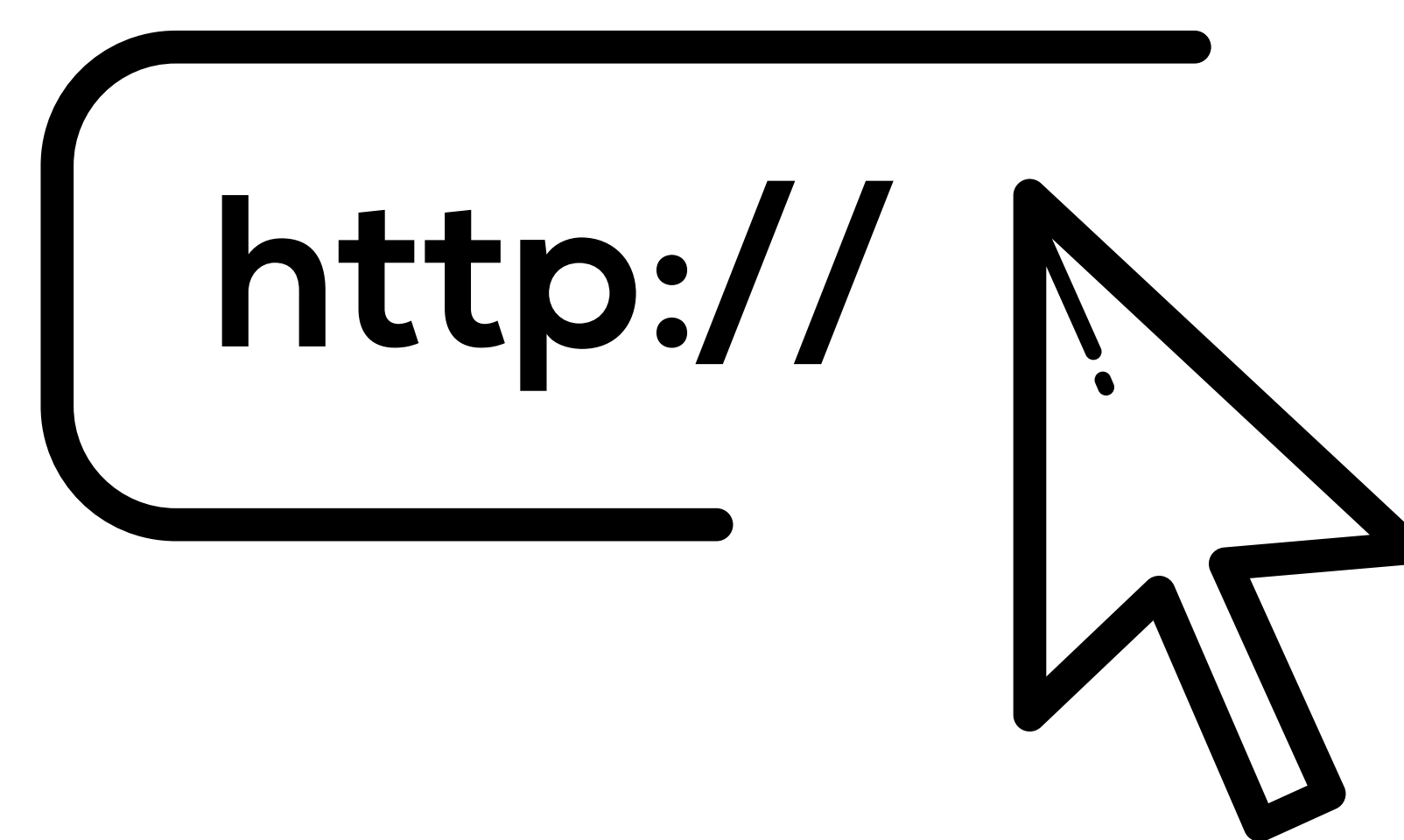
Getting Started



Emails



Internet



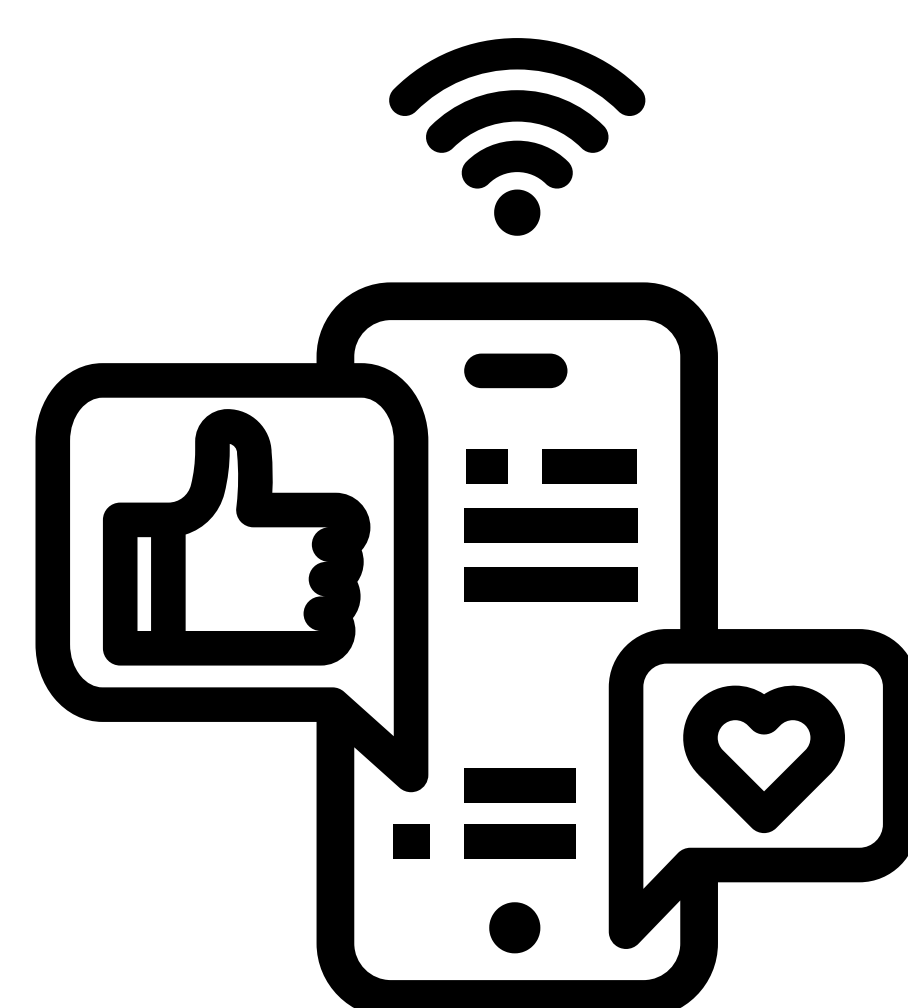
Staying Safe



Documents & Storage



Keeping in Touch



Photos





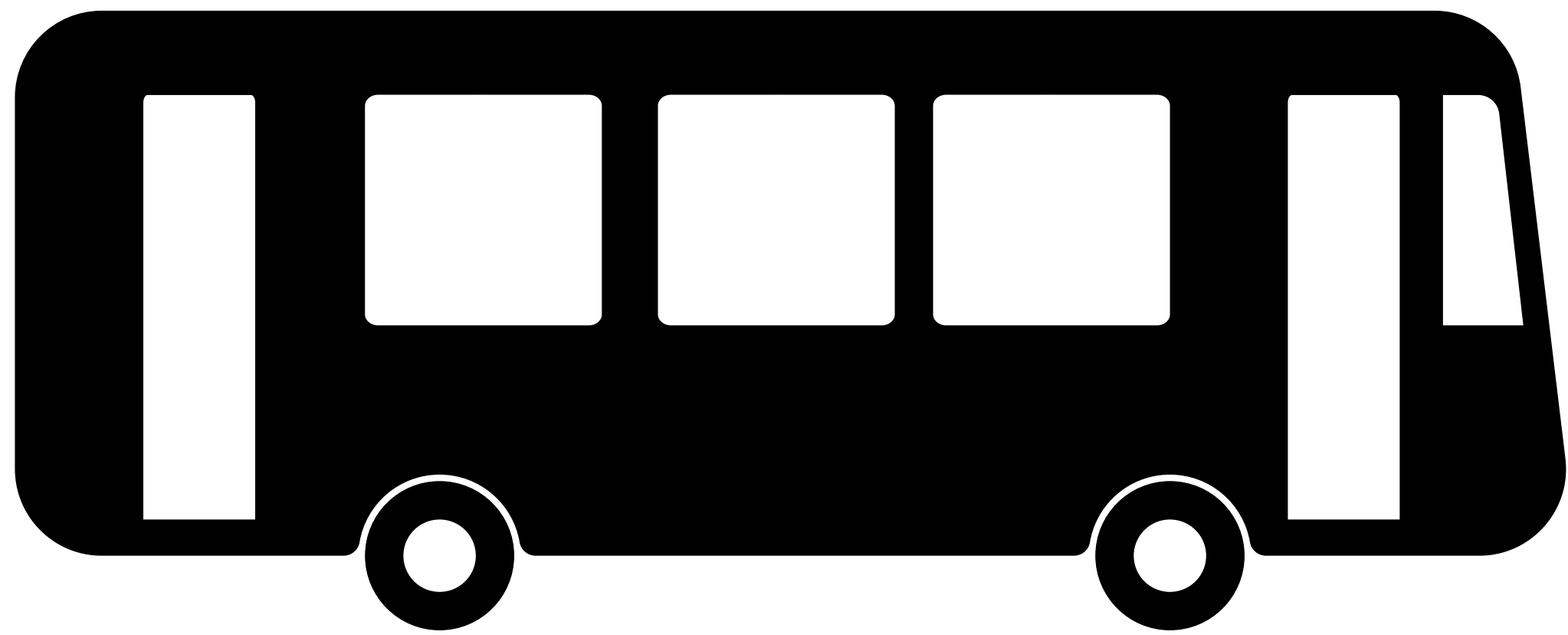
Changing Times, Changing Lives

How to get to Tesco Extra community space (SY1 4HA).

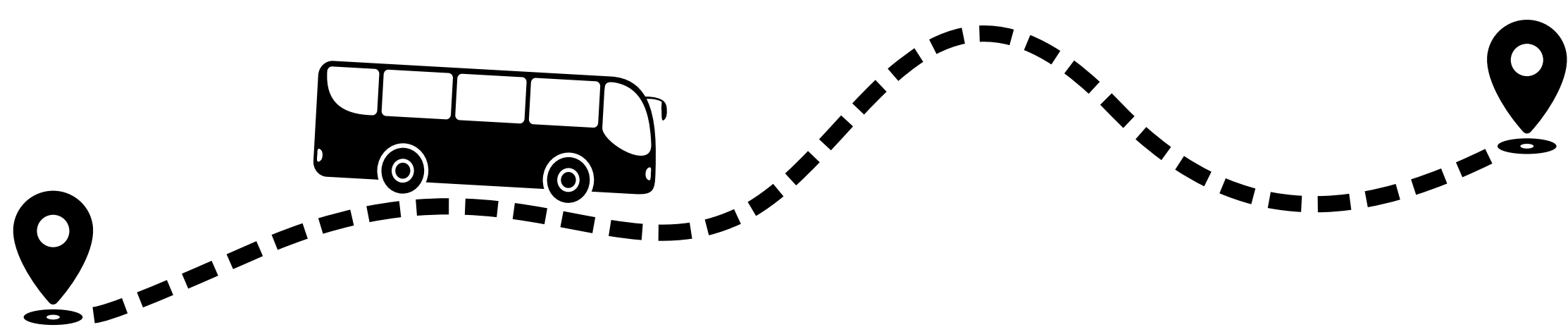


This is the address:
Tesco Extra,
Cattle Market,
Battlefield Road,
Shrewsbury,
SY1 4HA.

T
Tes



Take bus 25 from Shrewsbury
Bus Station (Stand J) to TESCO
Extra in Harlescott.



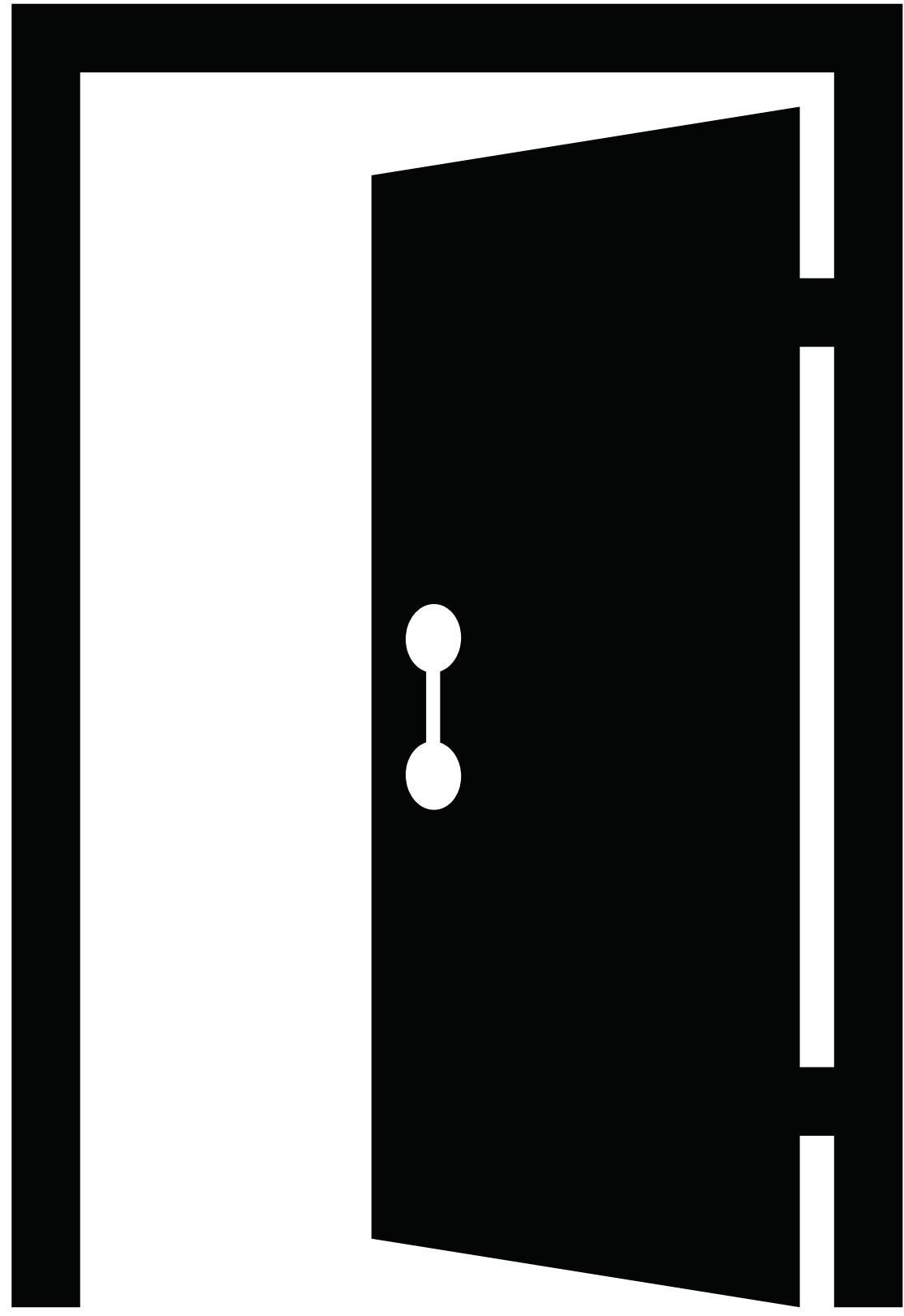
The last stop is at TESCO Extra.



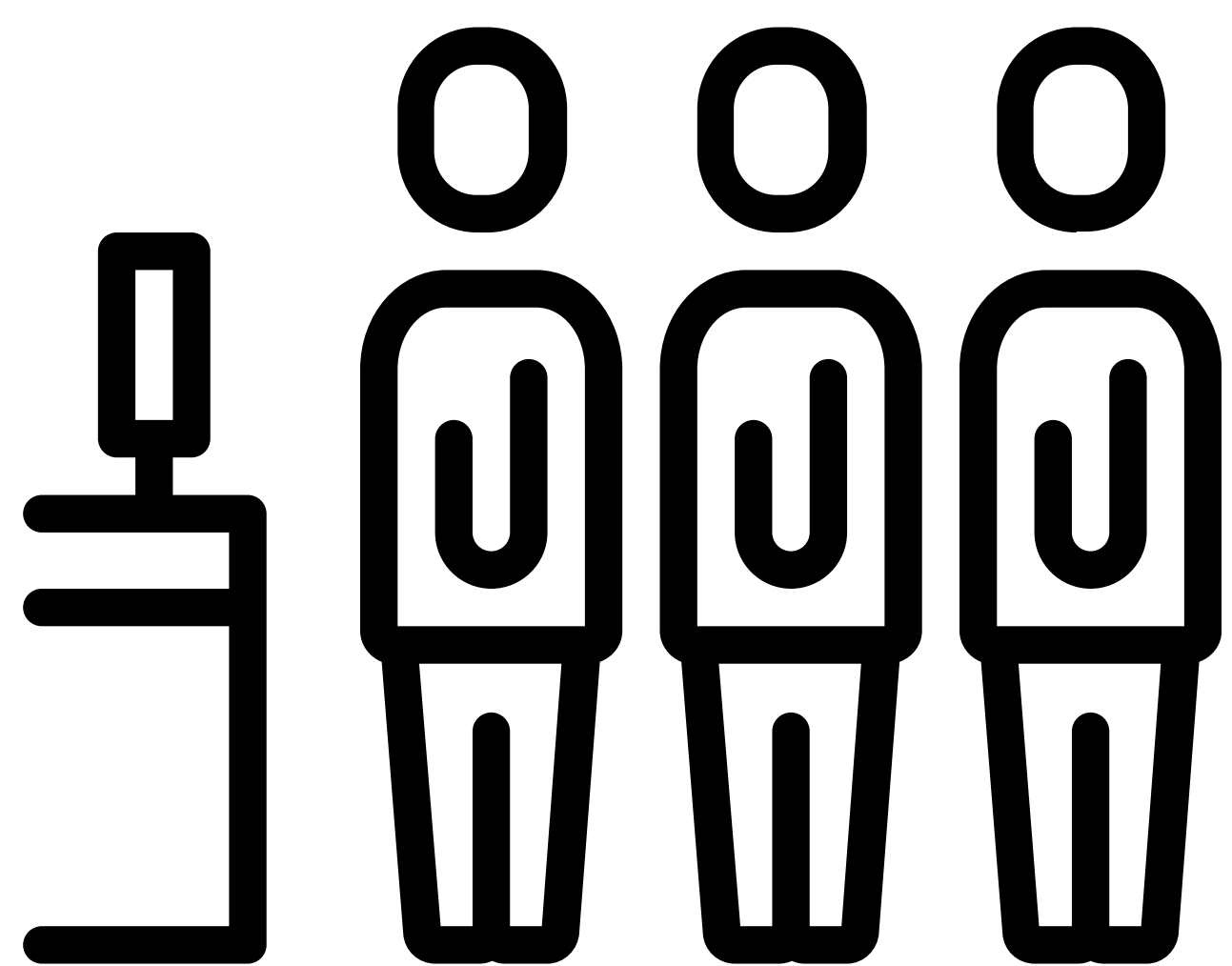
There is a large free car park.



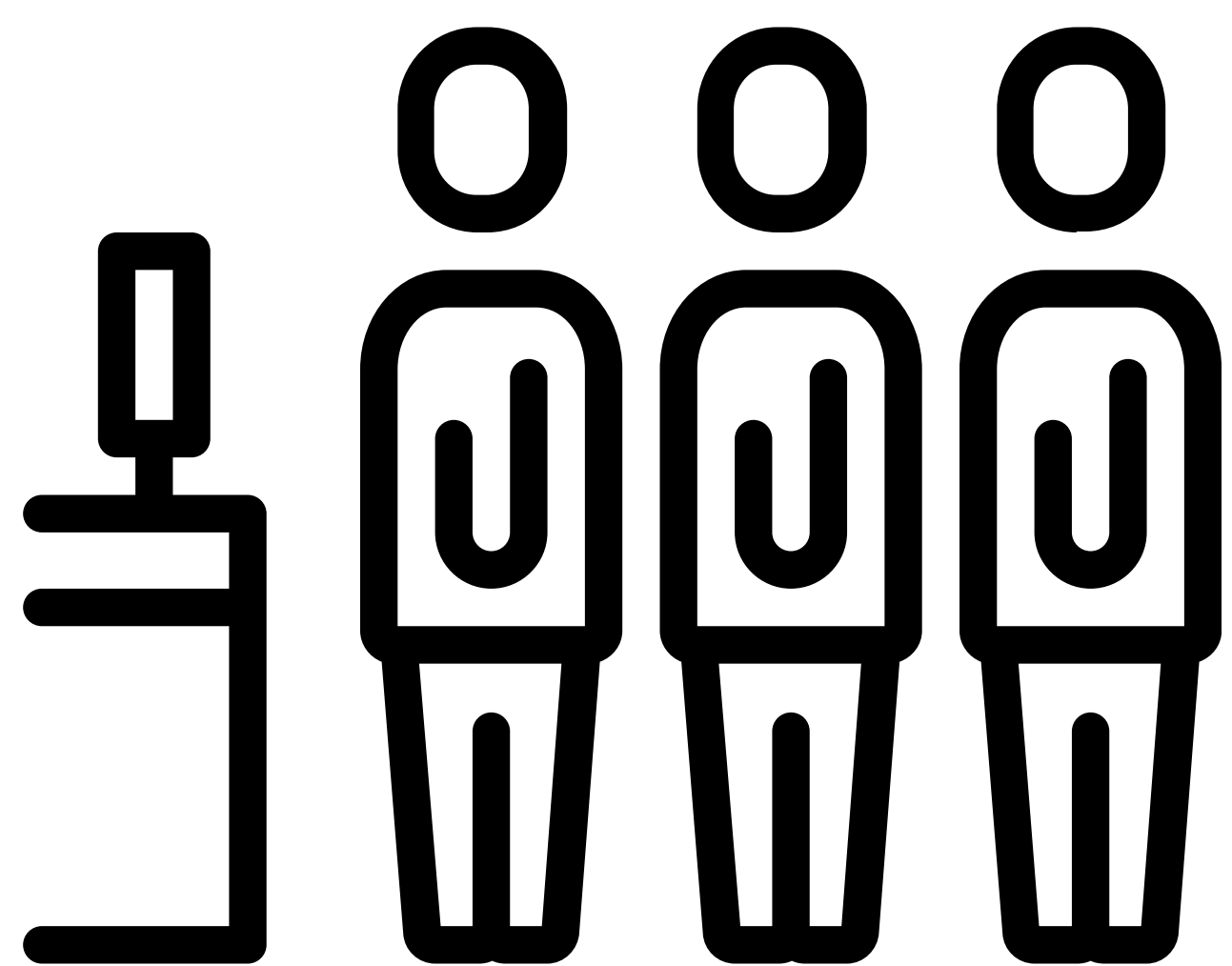
How to get to Tesco Extra community space (SY1 4HA).



You will find us in the
community space.



To get to the community space,
turn left as you go into the store.



Go to the far end of the store,
past all of the tills.

