

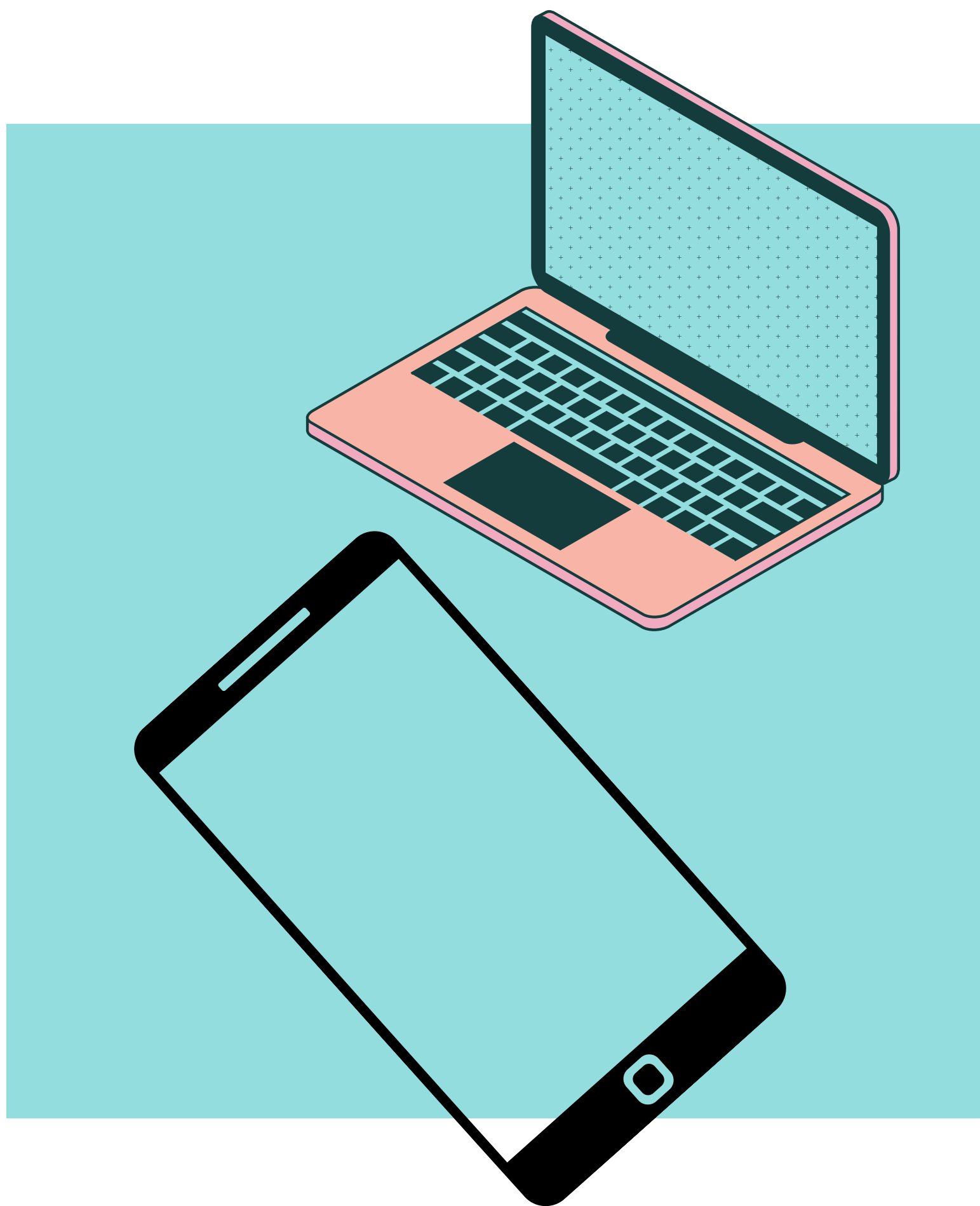


Funded by:

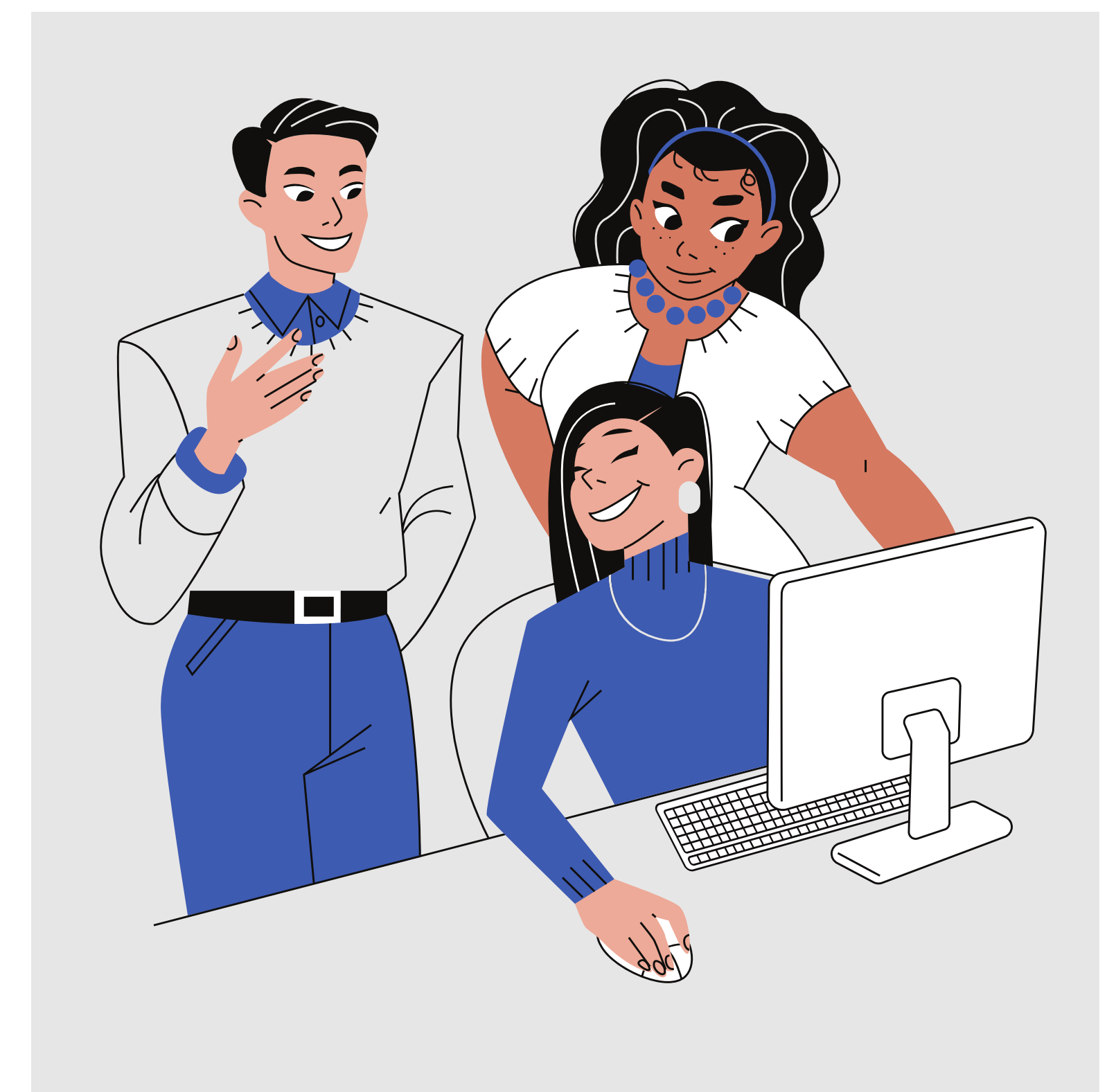


Taking Part Group Digital Skills Sessions

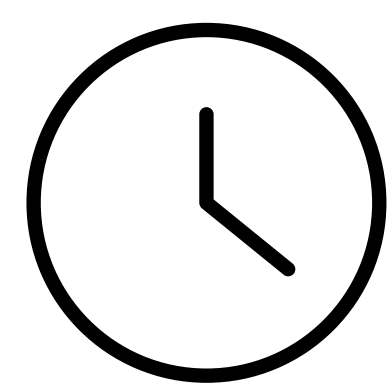
For adults with a learning disability living in Shropshire.



We support people to feel more comfortable using mobile phones, tablets and laptops.



Dates



and times

Friday 10th, Thursday 23rd and Friday 24th May
10:30am - 12:00pm



Location

Nerdy Café, 49 Mardol, Shrewsbury, SY1 1PP

Cost



Free



Who will be there?

- Taking Part staff
- Volunteers
- Guest speakers

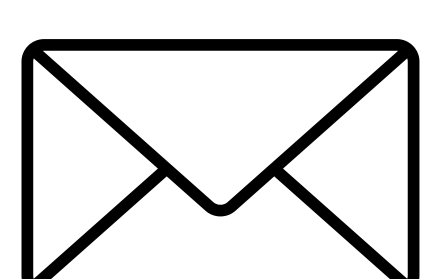


If you have not got a device we might be able to help you to get one.

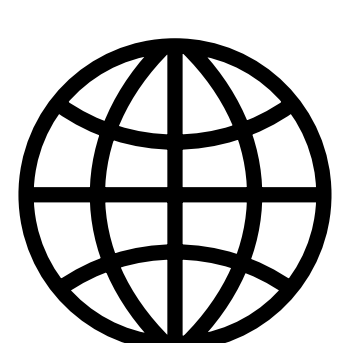
Join us or contact us to find out more!



01743 363399. WhatsApp/text 07397 64 66 08



takingpart@takingpart.co.uk

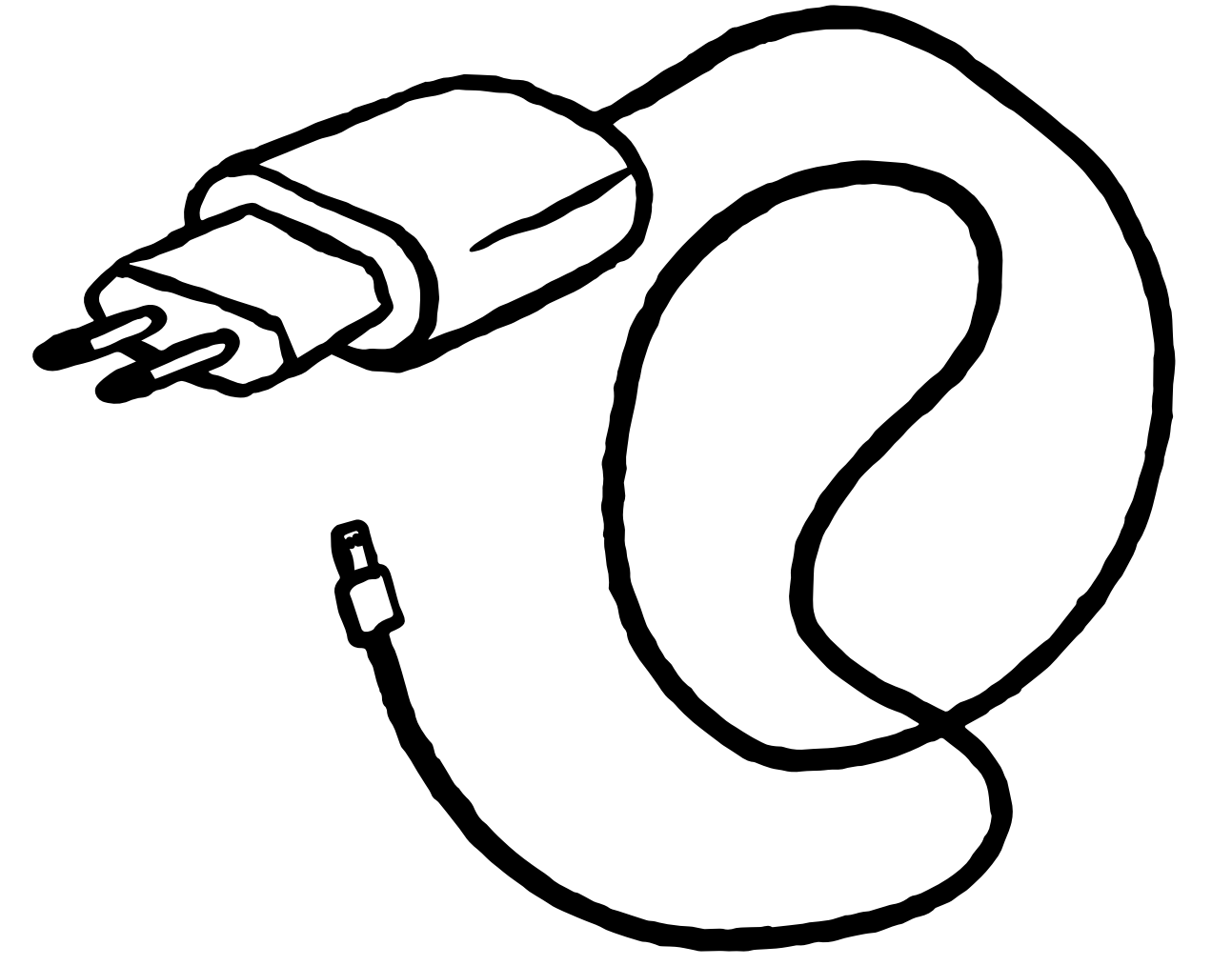
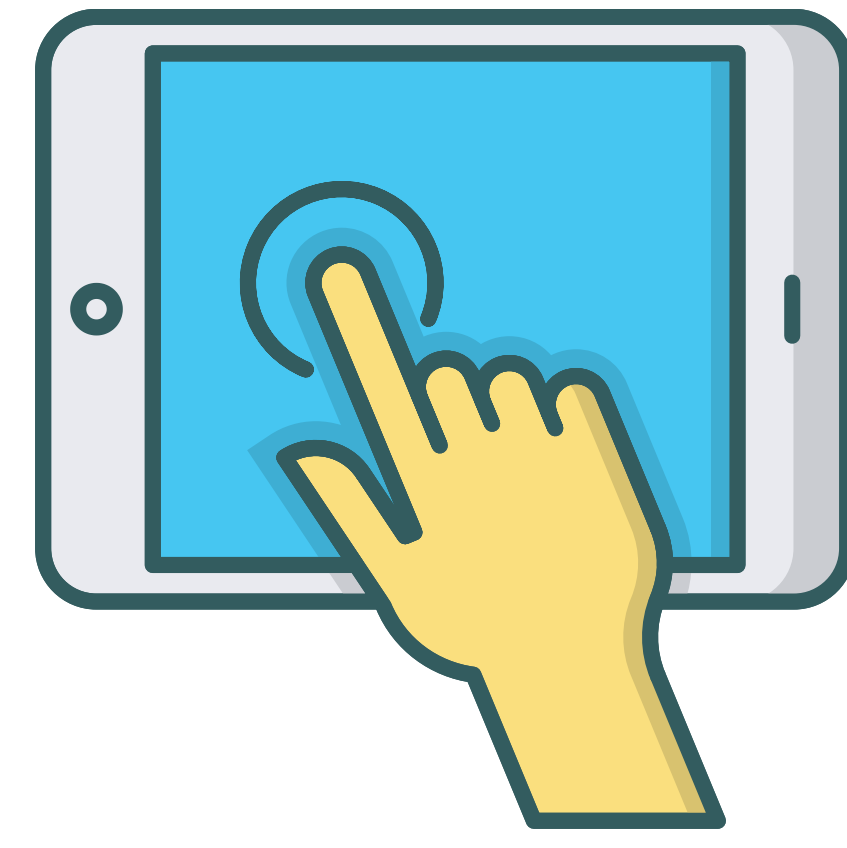


Future dates will be added to our Facebook page and website.
www.takingpart.co.uk

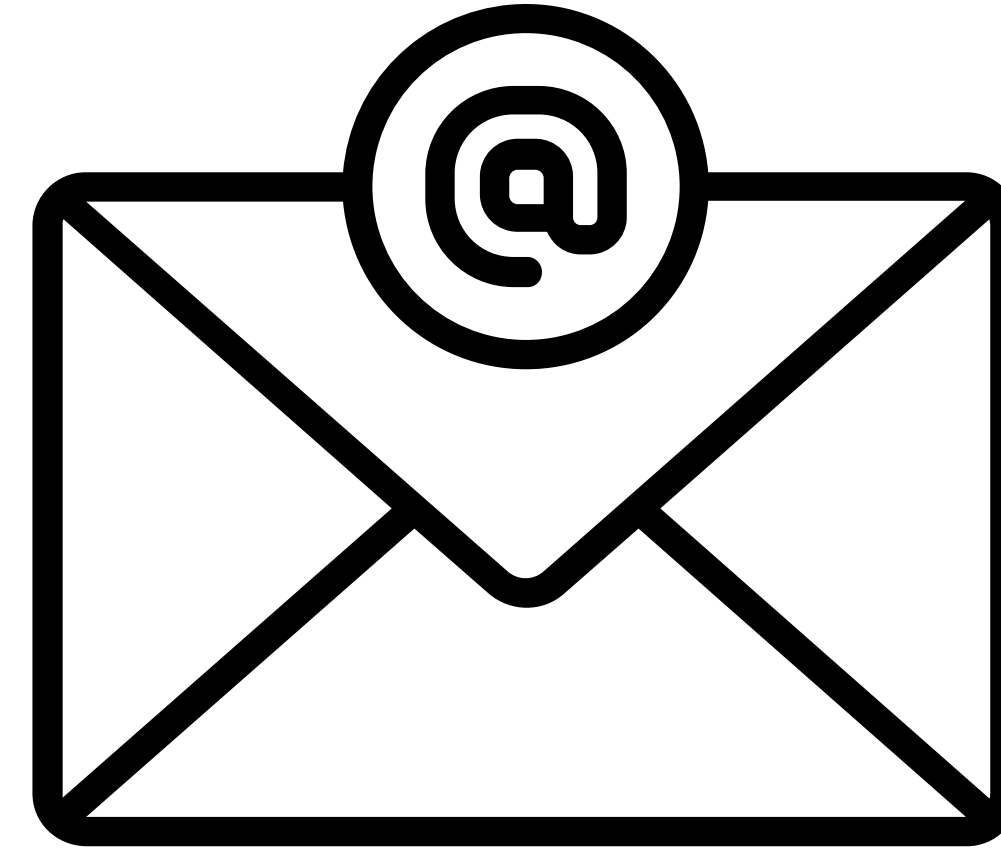


We might discuss the following during the session(s):

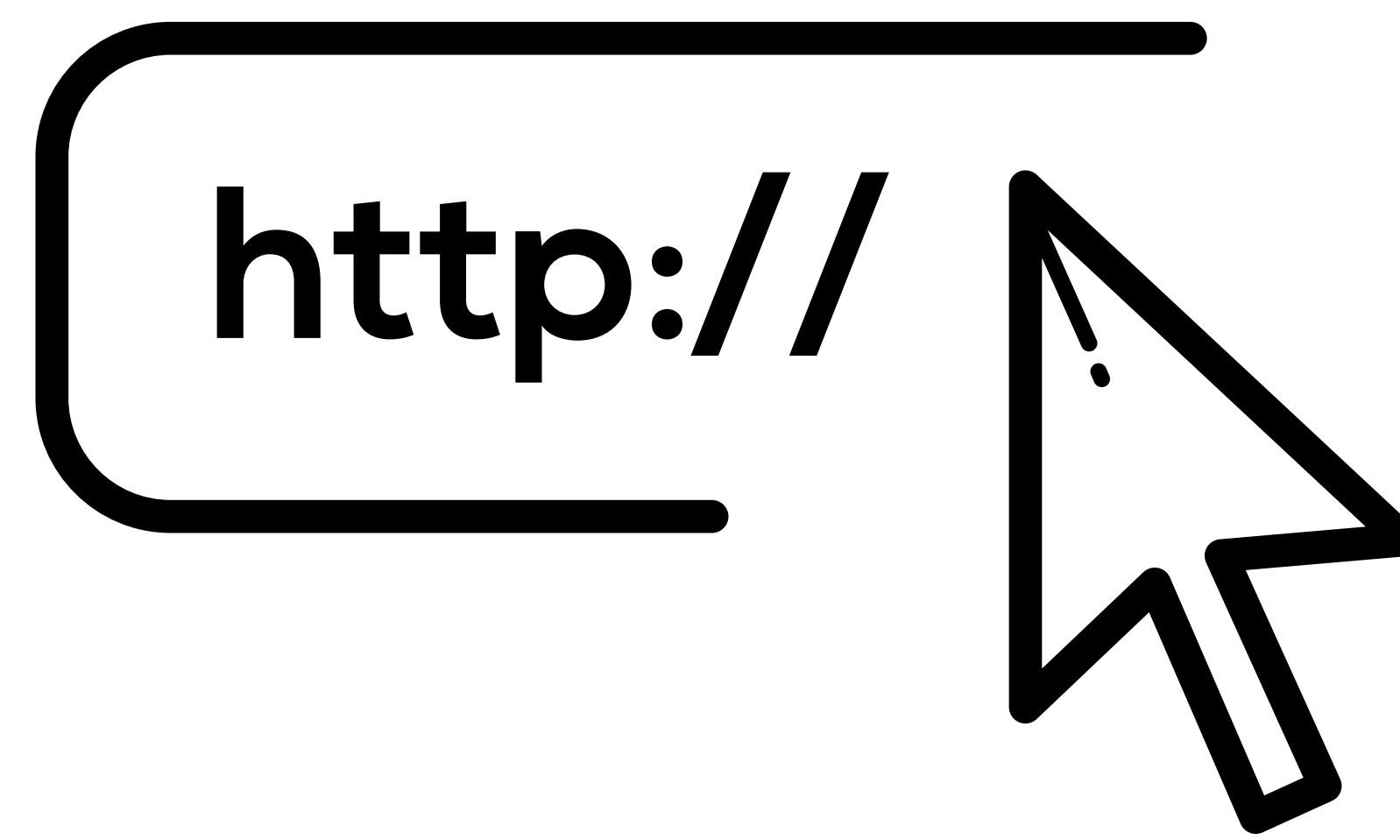
Getting Started



Emails



Internet



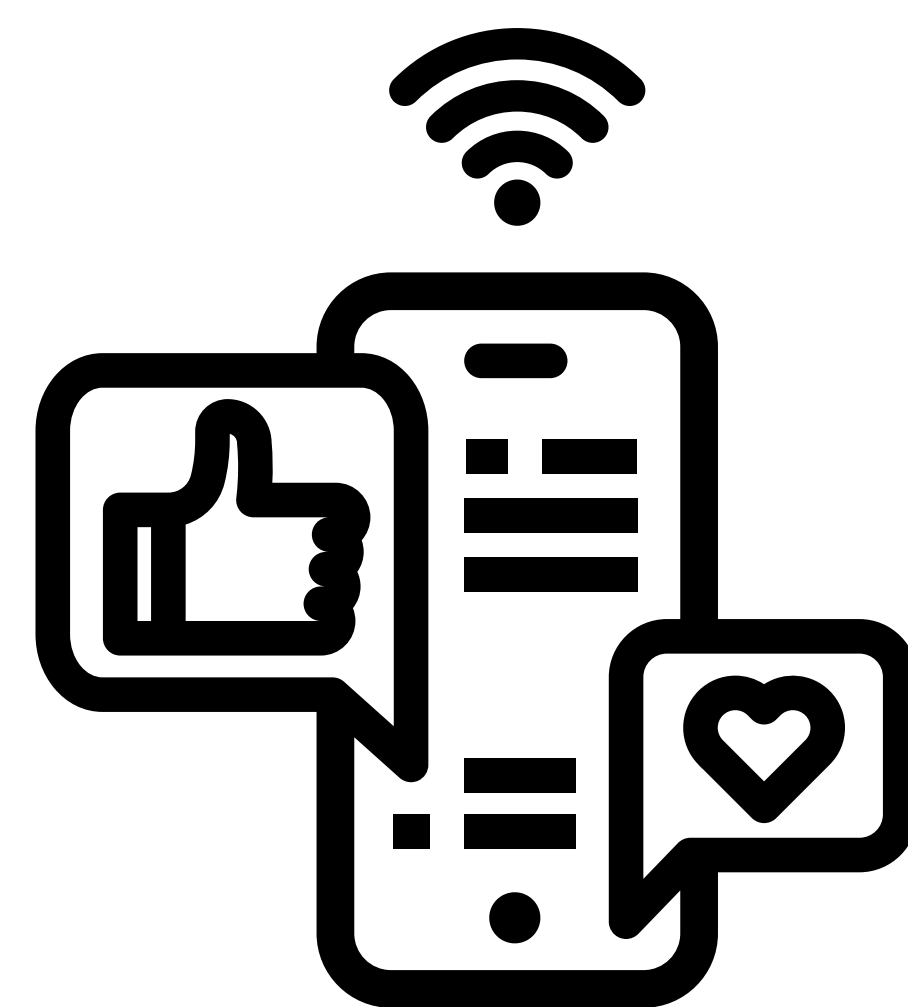
Staying Safe



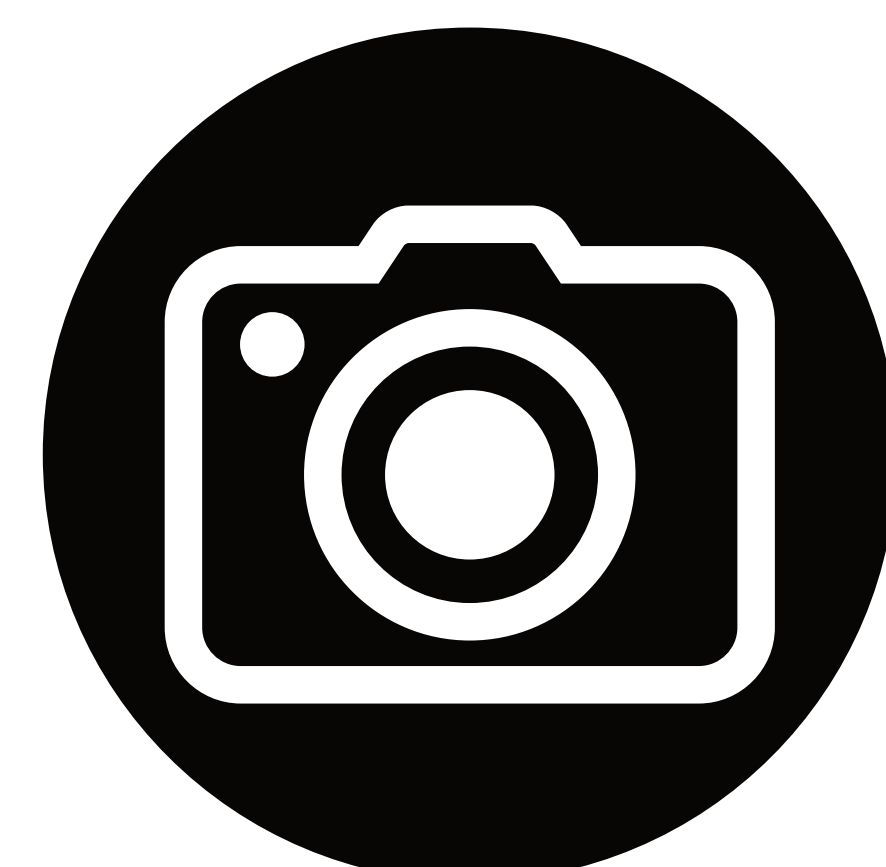
Documents & Storage



Keeping in Touch



Photos





How to get to Nerdy Café (SY1 1PP)

This is the address:

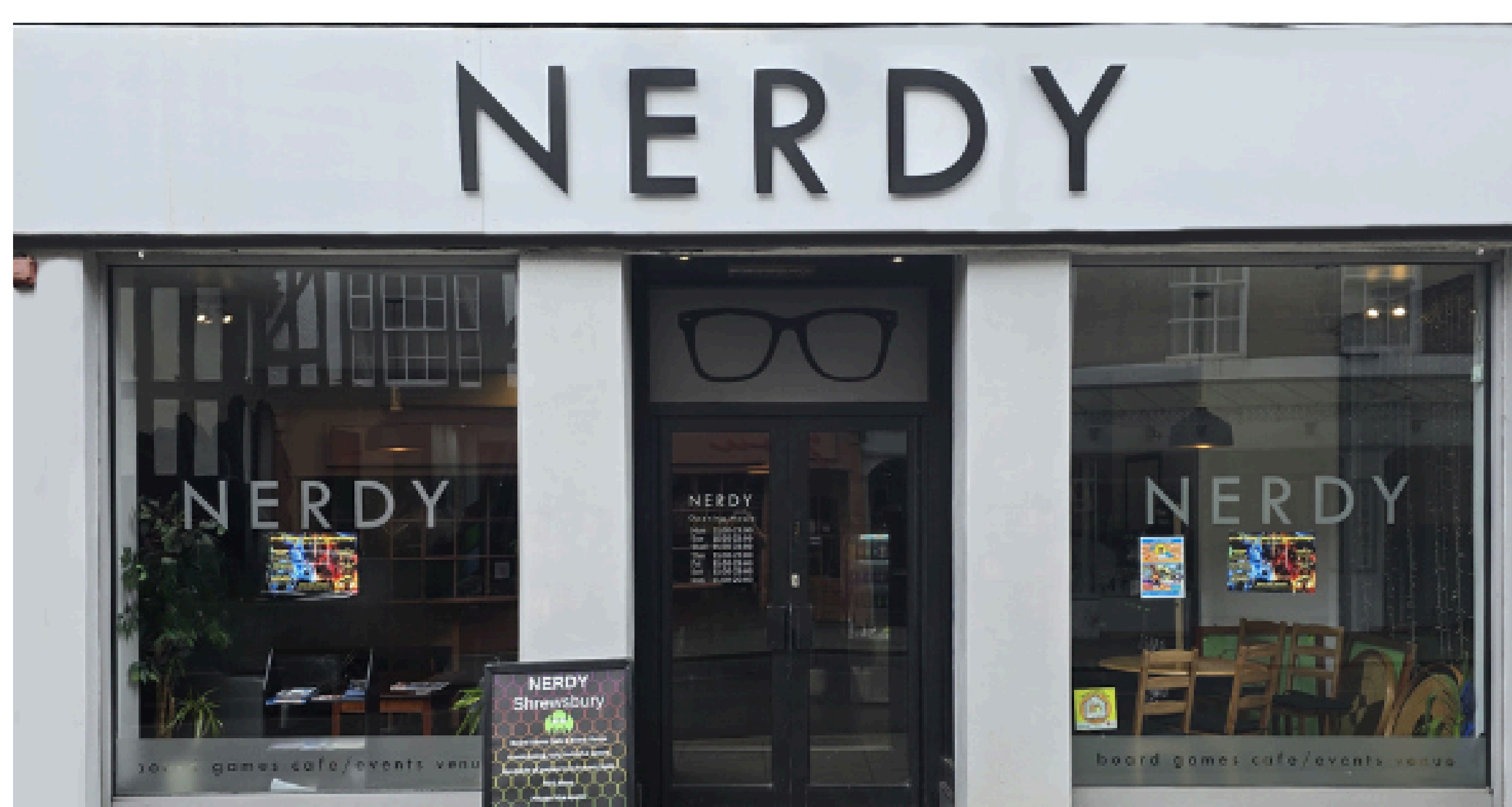


Nerdy Café,
49 Mardol,
Shrewsbury,
SY1 1PP.



Nerdy Café is in the town
centre.

It is a short walk from
Shrewsbury Bus Station.



This is a picture of the outside
of Nerdy Café.

There is limited street car
parking. The nearest car park is
Frankwell.